



JUSTICE COMMITTEE AGENDA
Law and Justice Center, Room 700

Monday, November 3, 2003

5:15 P.M.

1. Roll Call
2. Chairman's Approval of Minutes – October 6, 2003
3. Appearance by Members of the Public
4. Departmental Matters:
 - A. Roxanne Castleman, Court Services
 - 1) Items to be presented for Action:
 - a) Pre-Trial Release and Electronic Monitoring Program 1 - 2
 - 2) Items to be presented for Information:
 - a) Monthly Statistical Report 3 - 8
 - b) General Report
 - c) Other
 - B. Billie Larkin, Children's Advocacy Center
 - 1) Items to be presented for Information:
 - a) Monthly Statistical Report 9 - 10
 - b) General Report
 - c) Other
 - C. Bill Gamblin, 911 Administrator
 - 1) Items to be presented for Information:
 - a) General Report 11 - 18
 - b) Other
 - D. Amy Davis, Public Defender
 - 1) Items to be presented for Information:
 - a) Monthly Statistical Report 19 - 21
 - b) General Report
 - c) Other

- E. Sandra Parker, Circuit Clerk
- 1) Items to be presented for Information:
 - a) Monthly Statistical Report for September 2003 22 - 30
 - b) Third Quarter Statistical Report 31 - 38
 - c) General Report
 - d) Other
- F. David Owens, McLean County Sheriff
- 1) Items to be presented for Information:
 - a) McLean County Detention Facility Population Report 39 - 42
 - b) General Report
 - c) Other
- G. Beth Kimmerling, Coroner
- 1) Items to be presented for Information:
 - a) Morgue Facility Fee Increase 43 - 45
 - b) Monthly Report for September 2003 46
 - c) General Report
 - d) Other
- H. William A. Yoder, State's Attorney
- 1) Items to be presented for Action:
 - a) Summary of a Request for Approval of an Intergovernmental Agreement between the Illinois Department of Public Aid and the McLean County State's Attorney's Office for the IV-D Child Support Enforcement Program 47
 - 2) Items to be presented for Information:
 - a) Asset Forfeiture Fund Report 48
 - b) Case Load Report
 - c) General Report 49
 - d) Other
- I. Craig Nelson, Information Services
- 1) Items to be presented for Action:
 - a) Request Approval of Work Order Number 12 for Professional Services Agreement with Northrop Grumman Space and Mission Systems, Inc. – Court Services Department - Juvenile Detention Integrated Justice Information System Module 50 - 53
 - 2) Items to be presented for Information:
 - a) General Report
 - b) Other

J. John Zeunik, County Administrator

1) Items to be presented for Action:

- a) Request Approval of an Agreement to Provide Professional Consulting Services to the County of McLean, Illinois – Sheriff’s Fee Service Study 54 - 68
- b) Review of Fiscal Year 2004 Recommended Budget:
 - 1) Rescue Squad 69 - 71

5. Other Business and Communication

6. Recommend payment of Bills and Transfers, if any, to County Board

7. Adjournment

e:\ann\age\j_Nov.03

PRE-TRIAL RELEASE & ELECTRONIC MONITORING PROGRAM

Possible Revenue Sources: 6 Month Program beginning July 1, 2004

| | Option #1 | Option #2 |
|--|--|-------------------|
| In the Court Services Department Budget: | | |
| (1) Decrease Care & Support line-item by 25% | \$50,000 | \$62,000 |
| (2) Decrease Care & Support by 31% / No Change to Outside Prisoner Housing | | |
| In the Sheriff's Department Budget: | | |
| (1) Decrease Outside Prisoner Housing line-item by 20% | \$12,000 | \$0 |
| (2) No Change to Outside Prisoner Housing / Increase Funding from Care & Support | | |
| Recommend Approval of Sheriff's Fee Study: | | |
| --- Sheriff's Fee Study - Project Increase Bond Fee Revenues | \$14,000 | \$14,000 |
| In the Supervisor of Assessments Budget: | | |
| --- Retain GIS Fee Revenues for County GIS Cadastral Maintenance | \$30,000 | \$30,000 |
| | Total: \$106,000 | \$106,000 |
| | Projected Revenue Shortfall: (\$52,500) | (\$52,500) |

10/30/03

**EXHIBIT III
ELECTRONIC MONITORING
COSTS
GPS MONITOR @ \$8.00/DAY**

| | 40 Person Capacity | 12 month program | 6 month program | 2nd 6 months |
|------------------------------------|--------------------|------------------|-----------------|--------------|
| Equipment, Supplies & Monitoring | | | | |
| Lease 45 units @ \$8.00 | | \$131,400 | \$65,700 | \$65,700 |
| Monitoring Supplies | | \$900 | \$900 | \$0 |
| Phone lines for indigent offenders | | \$800 | \$400 | \$400 |
| Vehicle Operation/Maint. | | \$2,400 | \$1,200 | \$1,200 |
| | \$135,500 | | \$68,200 | \$67,300 |
| Staff | | | | |
| 4 Probation Officers @ \$31,800 | | \$127,200 | \$63,600 | \$63,600 |
| Benefits | | \$29,000 | \$14,500 | \$14,500 |
| AOIC Training | | \$2,400 | \$2,400 | \$0 |
| | \$158,600 | | \$80,500 | \$78,100 |
| Supplies, Equipment | | | | |
| Office Supplies | | \$1,000 | \$700 | \$300 |
| Computers | | \$3,000 | \$3,000 | \$0 |
| Phones | | \$1,200 | \$600 | \$600 |
| | \$5,200 | | \$4,300 | \$900 |
| Other Monitoring Costs | | | | |
| Substance Abuse Test Materials | | \$6,000 | \$3,000 | \$3,000 |
| Program Evaluation | | \$5,000 | \$2,500 | \$2,500 |
| | \$310,300 | | \$158,500 | \$151,800 |
| Total | | | | |
| Cost per inmate day | \$21.25 | | \$21.71 | \$20.80 |

September 2003

COURT SERVICES ADULT/JUVENILE DIVISION STATISTICS

ADULT DIVISION

7 Officer Supervision Unit plus 3 Officer PSI Unit

Total Caseload – 1094 (1070 last month)

Average caseload per officer 156 (60 AOIC recommendation)

Pre-sentence Reports Completed – 29 (37 last month)

* Total Workload Hours Needed – 2000.30 (1967.30 last month)

** Total Hours Available - 1650.00

* According to AOIC standards it would take this amount of hours per month to complete all requirements of case supervision and report writing.

** The number of work hours available to the division (11 officers working 150 hours each per month).

AOIC workload standards indicate **an additional 2.34 adult officers are needed.** (2.12 last month)

JUVENILE DIVISION

4 Officer Division

Total Caseload – 118 (120 last month)

Average caseload per officer 30 (35 AOIC recommendation)

Social History Reports Completed -- 10 (4 last month)

* Total Workload Hours Needed – 478.00 (411.00 last month)

** Total Hours Available 600.00

* According to AOIC standards it would take this amount of hours per month to complete all requirements of case supervision and report writing.

** The number of work hours available to the division (4 officers working 150 hours each per month).

AOIC workload standards indicate **an additional -0.81 juvenile officers are needed.** (-1.26 last month)

EARLY INTERVENTION PROBATION (EIP)

3 Person unit with a maximum caseload of 45

Total caseload 26

September 2003

SPECIAL PROGRAMS

INTENSIVE PROBATION UNIT ADULT

3 person unit with a maximum caseload of 40

Total Caseload – 51 (44 last month)

INTENSIVE PROBATION UNIT JUVENILE

1 ½ person unit with a maximum caseload of 15

Total Caseload – 16 (16 last month)

DRIVING UNDER THE INFLUENCE UNIT

1 person unit with a maximum caseload of 40

Total Caseload - 69 (70 last month)

JUVENILE INTAKE

2 person unit

Total Informal Conferences - 23 (23 last month)

Total Caseload Informal Probation – 76 (65 last month)

Total Intake Screen Reports – 87 (97 last month)

COMMUNITY SERVICE PROGRAM

1 person unit

Total Caseload Adult - 475 (435 last month)

Total Caseload Juvenile - 29 (29 last month)

Total Hours Completed Adult – 2057.00 (\$10,799.25 Symbolic Restitution)

Total Hours Completed Juvenile – 170.00 (\$ 892.50 Symbolic Restitution)

Total Worksites Used – 36 (36 last month)

DOMESTIC VIOLENCE PROGRAM

3 person unit (2 Officers and 1 Clerk)

Total Probation Caseload - 76 (75 last month)

Total Court Supervision/Conditional Discharge Caseload –348 (341 last month)

2003
JUVENILE DETENTION CENTER
MCLEAN COUNTY

| Ages of Minors Detained | Jan | Feb | Mar | Apr | May | Jun | Jul | Aug | Sep | Oct | Nov | Dec |
|---|-----|-----|-----|-----|-----|-----|-----|-----|-----|-----|-----|-----|
| 10 | 0 | 0 | 0 | 0 | 0 | 0 | 1 | 0 | 0 | | | |
| 11 | 0 | 0 | 0 | 1 | 0 | 0 | 0 | 0 | 0 | | | |
| 12 | 0 | 0 | 0 | 0 | 3 | 0 | 0 | 1 | 1 | | | |
| 13 | 0 | 1 | 0 | 2 | 5 | 0 | 3 | 0 | 2 | | | |
| 14 | 6 | 0 | 2 | 2 | 5 | 4 | 1 | 1 | 1 | | | |
| 15 | 7 | 4 | 8 | 18 | 3 | 3 | 8 | 8 | 3 | | | |
| 16 | 11 | 2 | 7 | 6 | 5 | 1 | 3 | 2 | 3 | | | |
| | | | | | | | | | | | | |
| Sex of Minors Detained | | | | | | | | | | | | |
| Male | 18 | 4 | 14 | 20 | 15 | 6 | 12 | 6 | 6 | | | |
| Female | 6 | 3 | 3 | 9 | 6 | 2 | 4 | 6 | 4 | | | |
| | | | | | | | | | | | | |
| Race of Minors Detained | | | | | | | | | | | | |
| Caucasian | 6 | 1 | 7 | 20 | 12 | 5 | 13 | 8 | 6 | | | |
| African-American | 17 | 6 | 10 | 9 | 9 | 3 | 3 | 3 | 4 | | | |
| Hispanic | 1 | 0 | 0 | 0 | 0 | 0 | 0 | 1 | 0 | | | |
| | | | | | | | | | | | | |
| Offenses of Which Minor was Detained | | | | | | | | | | | | |
| Dispositional Detention | 13 | 3 | 6 | 8 | 3 | 2 | 5 | 5 | 3 | | | |
| Warrant | 3 | 0 | 2 | 4 | 3 | 4 | 1 | 0 | 3 | | | |
| Aggravated Assault | 0 | 0 | 0 | 1 | 0 | 0 | 0 | 0 | 0 | | | |
| Aggravated Battery | 1 | 0 | 1 | 3 | 2 | 0 | 0 | 0 | 0 | | | |
| Aggravated Criminal Sexual Abuse | 0 | 0 | 0 | 0 | 1 | 0 | 0 | 0 | 0 | | | |
| Aggravated Criminal Sexual Assault | 0 | 0 | 1 | 0 | 0 | 0 | 0 | 0 | 0 | | | |
| Aggravated Domestic Battery | 0 | 0 | 1 | 1 | 0 | 0 | 0 | 0 | 0 | | | |
| Burglary | 0 | 0 | 0 | 0 | 0 | 0 | 1 | 1 | 2 | | | |
| Burglary to Motor Vehicle | 0 | 0 | 0 | 2 | 2 | 0 | 1 | 0 | 0 | | | |
| Court Ordered | 0 | 0 | 0 | 2 | 0 | 0 | 0 | 0 | 0 | | | |
| Criminal Damage to Property Over \$300 | 0 | 0 | 0 | 0 | 0 | 0 | 0 | 1 | 0 | | | |
| Criminal Drug Conspiracy | 1 | 0 | 0 | 0 | 0 | 0 | 0 | 0 | 0 | | | |
| Delivery of Controlled Substance | 0 | 1 | 0 | 0 | 0 | 0 | 0 | 0 | 0 | | | |
| DOC | 0 | 1 | 1 | 0 | 1 | 0 | 0 | 0 | 2 | | | |
| Domestic Battery | 0 | 0 | 0 | 2 | 2 | 0 | 2 | 2 | 0 | | | |
| Felony Retail Theft | 0 | 0 | 1 | 0 | 0 | 0 | 0 | 0 | 0 | | | |
| Home Invasion | 0 | 0 | 0 | 0 | 2 | 0 | 0 | 0 | 0 | | | |

2003
JUVENILE DETENTION CENTER
MCLEAN COUNTY

| | Jan | Feb | Mar | Apr | May | Jun | Jul | Aug | Sep | Oct | Nov | Dec |
|-------------------------------------|--------|--------|-----|-----|------|-----|-----|-----|-----|-----|-----|-----|
| Motor Vehicle Theft | 0 | 0 | 0 | 0 | 1 | 0 | 0 | 0 | 0 | | | |
| Obstructing a Peace Officer | 0 | 0 | 0 | 1 | 0 | 0 | 0 | 0 | 0 | | | |
| Possession of Marijuana | 0 | 0 | 1 | 0 | 0 | 0 | 0 | 0 | 0 | | | |
| Possession of Stolen Vehicle | 0 | 0 | 0 | 0 | 0 | 0 | 0 | 1 | 0 | | | |
| Request for Apprehension | 3 | 2 | 3 | 4 | 3 | 2 | 5 | 2 | 0 | | | |
| Residential Burglary | 3 | 0 | 0 | 1 | 1 | 0 | 1 | 0 | 0 | | | |
| Residence of Minors Detained | | | | | | | | | | | | |
| Bloomington | 20 | 7 | 13 | 17 | 14 | 5 | 10 | 7 | 5 | | | |
| Normal | 1 | 0 | 4 | 9 | 4 | 2 | 2 | 2 | 4 | | | |
| Carlock | 0 | 0 | 0 | 0 | 0 | 0 | 1 | 1 | 0 | | | |
| Chenoa | 0 | 0 | 0 | 0 | 0 | 1 | 0 | 0 | 0 | | | |
| Chicago | 1 | 0 | 0 | 1 | 0 | 0 | 0 | 0 | 0 | | | |
| Danvers | 0 | 0 | 0 | 1 | 1 | 0 | 0 | 0 | 0 | | | |
| Downs | 2 | 0 | 0 | 0 | 0 | 0 | 0 | 1 | 1 | | | |
| Heyworth | 0 | 0 | 0 | 0 | 1 | 0 | 1 | 0 | 0 | | | |
| Kankakee | 0 | 0 | 0 | 1 | 0 | 0 | 0 | 0 | 0 | | | |
| Kappa | 0 | 0 | 0 | 0 | 0 | 0 | 1 | 0 | 0 | | | |
| LeRoy | 0 | 0 | 0 | 0 | 0 | 0 | 1 | 0 | 0 | | | |
| Saybrook | 0 | 0 | 0 | 0 | 1 | 0 | 0 | 0 | 0 | | | |
| Missouri | 0 | 0 | 0 | 0 | 0 | 0 | 0 | 1 | 0 | | | |
| Average Daily Population | 9 | 8.6 | 7 | 12 | 13.9 | 8.8 | 7.4 | 6.9 | 4.2 | | | |
| Average Daily Population:YTD | 9 | 8.8 | 8.2 | 9.2 | 10.1 | 9.9 | 9.5 | 9.2 | 8.6 | | | |
| Number of Days in Detention | 279 | 240 | 216 | 359 | 431 | 263 | 228 | 214 | 126 | | | |
| Revenue: | 157.22 | 155.89 | 65 | 50 | 150 | 50 | 100 | 150 | 50 | | | |


2003
JUVENILE DETENTION CENTER
OUT OF COUNTY

| Ages of Minors Detained | Jan | Feb | Mar | Apr | May | Jun | Jul | Aug | Sep | Oct | Nov | Dec |
|---|-----|-----|-----|-----|-----|-----|-----|-----|-----|-----|-----|-----|
| 10 | 0 | 0 | 0 | 0 | 0 | 0 | 0 | 0 | 0 | 0 | | |
| 11 | 0 | 0 | 0 | 0 | 0 | 0 | 0 | 0 | 0 | 0 | | |
| 12 | 1 | 0 | 0 | 0 | 2 | 0 | 0 | 1 | 2 | | | |
| 13 | 1 | 0 | 0 | 0 | 0 | 1 | 1 | 0 | 2 | | | |
| 14 | 2 | 1 | 2 | 4 | 7 | 4 | 0 | 1 | 5 | | | |
| 15 | 4 | 3 | 2 | 3 | 2 | 6 | 1 | 5 | 7 | | | |
| 16 | 6 | 5 | 6 | 7 | 11 | 11 | 2 | 1 | 9 | | | |
| Sex of Minors Detained | | | | | | | | | | | | |
| Male | 9 | 5 | 8 | 8 | 18 | 18 | 3 | 5 | 19 | | | |
| Female | 5 | 4 | 2 | 6 | 4 | 4 | 1 | 3 | 6 | | | |
| Race of Minors Detained | | | | | | | | | | | | |
| Caucasian | 12 | 6 | 10 | 11 | 21 | 21 | 3 | 8 | 19 | | | |
| African-American | 1 | 0 | 0 | 3 | 1 | 0 | 1 | 0 | 5 | | | |
| Hispanic | 1 | 3 | 0 | 0 | 0 | 1 | 0 | 0 | 1 | | | |
| Offenses of Which Minor was Detained | | | | | | | | | | | | |
| Dispositional Detention | 12 | 3 | 8 | 12 | 18 | 21 | 2 | 4 | 13 | | | |
| Warrant | 0 | 2 | 1 | 2 | 1 | 0 | 0 | 1 | 5 | | | |
| Contempt of Court | 0 | 0 | 0 | 0 | 0 | 0 | 0 | 0 | 1 | | | |
| Criminal Damage to Property | 0 | 0 | 0 | 0 | 1 | 0 | 0 | 0 | 0 | | | |
| DOC | 0 | 2 | 0 | 0 | 0 | 0 | 0 | 1 | 2 | | | |
| DOC Warrant | 2 | 0 | 1 | 0 | 0 | 1 | 0 | 0 | 0 | | | |
| Domestic Battery With Bodily Harm | 0 | 1 | 0 | 0 | 0 | 0 | 0 | 0 | 0 | | | |
| Possession of Controlled Substance | 0 | 1 | 0 | 0 | 0 | 0 | 0 | 0 | 0 | | | |
| Possession of Drug Paraphernalia | 0 | 0 | 0 | 0 | 0 | 0 | 0 | 1 | 0 | | | |
| Possession of Stolen Vehicle | 0 | 0 | 0 | 0 | 0 | 0 | 0 | 0 | 0 | | | |
| Probation Violation | 0 | 0 | 0 | 0 | 2 | 0 | 0 | 0 | 0 | | | |
| Residential Burglary | 0 | 0 | 0 | 0 | 0 | 0 | 0 | 1 | 0 | | | |
| Residence of Minors Detained | | | | | | | | | | | | |
| Adams | 0 | 0 | 0 | 0 | 0 | 0 | 0 | 0 | 1 | | | |
| Bureau | 0 | 1 | 0 | 0 | 0 | 0 | 5 | 1 | 0 | | | |

2003
**JUVENILE DETENTION CENTER
 OUT OF COUNTY**

| | Jan | Feb | Mar | Apr | May | Jun | Jul | Aug | Sep | Oct | Nov | Dec |
|-------------------------------------|------|------|------|------|-------|-------|------|------|-------|-----|-----|-----|
| DeWitt | 0 | 1 | 1 | 0 | 0 | 1 | 1 | 1 | 1 | | | |
| DOC | 2 | 0 | 1 | 0 | 0 | 1 | 0 | 0 | 0 | | | |
| Douglas | 0 | 0 | 0 | 0 | 0 | 0 | 0 | 2 | 0 | | | |
| Henderson | 0 | 0 | 0 | 0 | 1 | 0 | 0 | 0 | 0 | | | |
| Henry | 0 | 0 | 0 | 0 | 1 | 0 | 0 | 0 | 0 | 2 | | |
| Livingston | 2 | 1 | 1 | 3 | 6 | 5 | 0 | 2 | 3 | | | |
| Logan | 6 | 2 | 5 | 6 | 13 | 7 | 0 | 1 | 11 | | | |
| Madison | 0 | 0 | 0 | 1 | 0 | 0 | 0 | 0 | 0 | | | |
| Mason | 0 | 1 | 0 | 0 | 0 | 0 | 1 | 2 | 0 | | | |
| McDonough | 0 | 2 | 0 | 0 | 0 | 0 | 0 | 0 | 0 | | | |
| Rock Island | 1 | 0 | 2 | 3 | 1 | 1 | 1 | 0 | 4 | | | |
| Tazewell | 1 | 0 | 0 | 0 | 0 | 0 | 0 | 0 | 0 | | | |
| Woodford | 2 | 1 | 0 | 0 | 1 | 2 | 0 | 0 | 1 | | | |
| | | | | | | | | | | | | |
| Average Daily Population | 3.3 | 1.8 | 2.5 | 2.4 | 4.6 | 9.2 | 2.9 | 2.8 | 5.9 | | | |
| Average Daily Population:YTD | 3.3 | 2.6 | 2.5 | 2.5 | 2.9 | 4 | 3.8 | 3.7 | 3.9 | | | |
| Number of Days in Detention | 102 | 49 | 77 | 71 | 144 | 276 | 91 | 88 | 178 | | | |
| Revenue: | 9570 | 4490 | 7370 | 5950 | 13420 | 27720 | 9570 | 8800 | 16830 | | | |

McLean County Children's Advocacy Center Monthly Statistics September 2003

|  | 2002 1st INTERVIEW MONTH/YTD STATS | 1st. INTERVIEW 2003 | JUV. SUSPECT INTERVIEW 2003 | SPB/WITNESS INTERVIEW 2003 | 2ND INTERVIEW 2003 | OUT OF COUNTY INTERVIEW | TOTAL MONTHLY INTERVIEWS | YTD TOTALS |
|---|---|---------------------------|-----------------------------------|----------------------------------|--------------------------|----------------------------|-----------------------------|---------------|
| JANUARY | 12/12 | 8/8 | 0 | 2 | 1 | 1 | 12 | 12 |
| FEBRUARY | 13/25 | 8/16 | 1 | 2 | 1 | 4 | 16 | 28 |
| MARCH | 13/38 | 15/31 | 0 | 7 | 1 | 1 | 24 | 52 |
| APRIL | 13/51 | 6/37 | 0 | 4 | 1 | 2 | 13 | 65 |
| MAY | 16/67 | 9/46 | 1 | 1 | 1 | 1 | 13 | 78 |
| JUNE | 16/83 | 12/58 | 0 | 2 | 0 | 0 | 14 | 92 |
| JULY | 14/97 | 12/70 | 1 | 7 | 0 | 0 | 20 | 112 |
| AUGUST | 10/107 | 7/77 | 0 | 2 | 0 | 1 | 10 | 122 |
| SEPTEMBER | 14/121 | 17/94 | 3 | 3 | 0 | 1 | 24 | 146 |
| OCTOBER | 13/134 | | | | | | | |
| NOVEMBER | 11/145 | | | | | | | |
| DECEMBER | 14/159 | | | | | | | |
| YEAR TO DATE TOTALS | 159 | 94 | 6 | 30 | 5 | 11 | 146 | 146 |

**CASA Statistics
Month of September, 2003**

| | Current Month | YTD |
|---------------------------------|----------------------|------------|
| New Cases Assigned | 2 | 35 |
| Cases Awaiting Assignment | 4 | 8 |
| Cases Closed | 3 | 11 |
| Children Awaiting Assignment | 9 | 31 |
| Children Currently Served | 4 | 229 |
| Total Number of CASA's Assigned | 2 | 123 |
| Resigned CASA's | 3 | 14 |
| Reports Filed | 29 | 223 |
| Court Hearings Attended | 31 | 247 |

Updates:

We held two CASA Informational meetings on September 10th and 13th respectively. Our volunteer recruiter has been actively seeking volunteers for our fall class. We had 11 attendees at the Informational meetings. Our fall class began on September 29th, and will end on November 6th. We anticipate that we will have 9 class graduates at the Swearing In. We have cases ready for this class to assume right away, as Judge Dozier has been sending case referrals. Recently the Judge and the Guardian Ad-Litem spoke to the class of volunteers. The Judge reinitiated the need for a CASA volunteer on each case, however, as there are not enough volunteers, he really has to pick and choose which cases really need a CASA. In essence, the volunteers will get the more difficult cases.

Above note that we closed three cases this month. Each of those cases ending very successfully. In one case, 3 children were adopted, in another 1 was adopted, and in the final case 4 children were returned home to their parents. The CASA's on these cases did make a difference for the lives of these children.

Memo

Date: 10/27/2003
To: The Honorable T. Renner and Honorable Members of the Justice Committee
Cc: File
From: W. H. Gamblin, E9-1-1 Administrator
RE: Monthly Statistics

Please find attached the ETSB monthly report of operations. I will be unable to attend the meeting as I will be out of state but will be at the December meeting. If you have any questions before that meeting please call upon me.

Thank you.

Respectfully submitted,


William H. Gamblin, ENP

WHG

Attachments

Board Memo

Date: 10/3/2003
To: The Honorable Dennis Powell and Honorable Members of the ETSB
Cc: File
From: W. H. Gamblin, E9-1-1 Administrator
RE: September 911 Calls

Please find the chart for the September 9-1-1 calls.

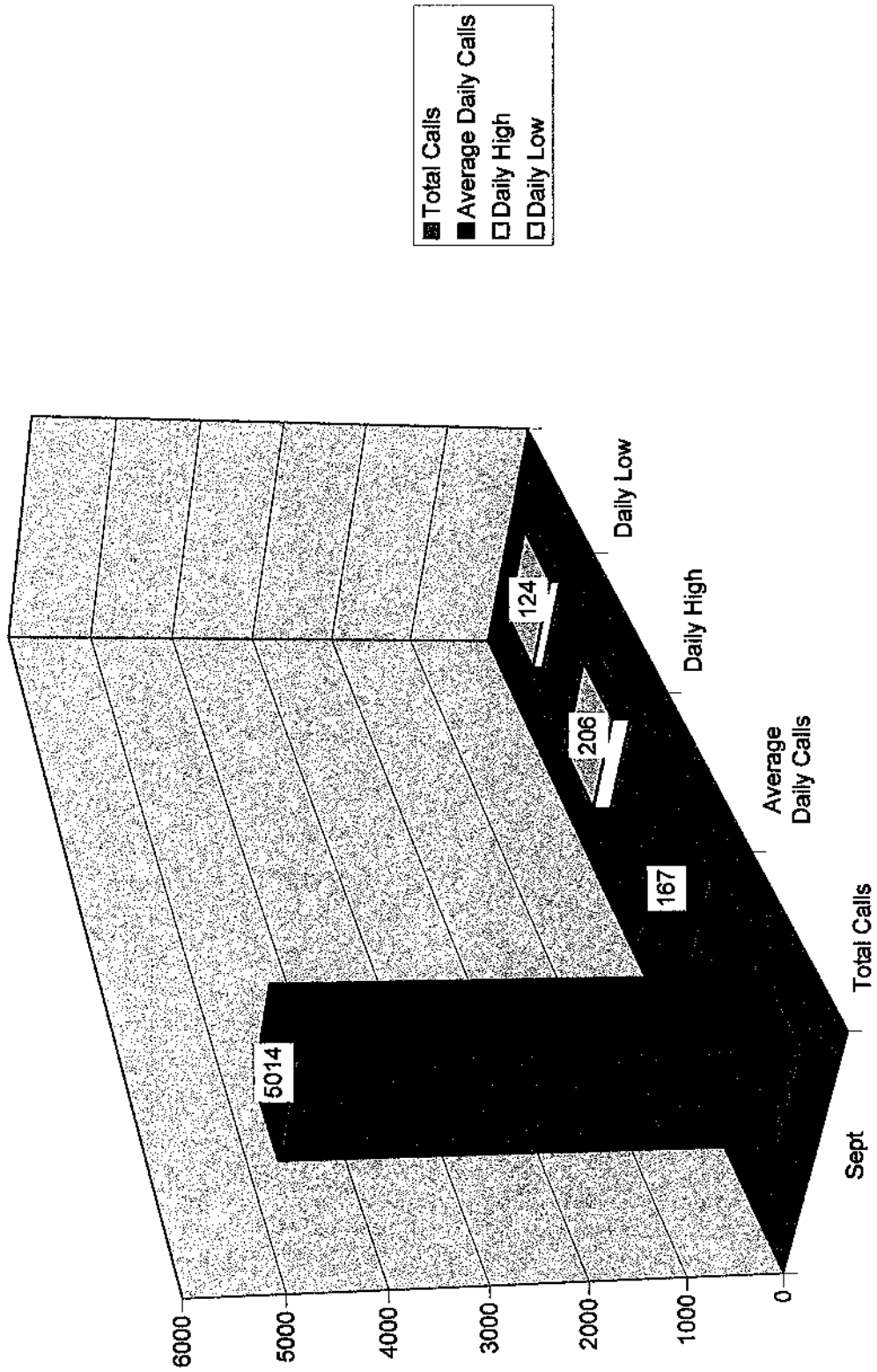
Respectfully submitted,

William Gamblin

WHG

Attachments

9-1-1 Calls For September 2003



Board Memo

Date: 10/3/2003

To: The Honorable Dennis Powell, Chair and Honorable Members of the ETSB

Cc: File

From: W. H. Gamblin, E9-1-1 Administrator

RE: CAD Responses

Please find the CAD Response report for Aug. 2002 to Sept. 2003.

Respectfully submitted,

William Gamblin

WHG

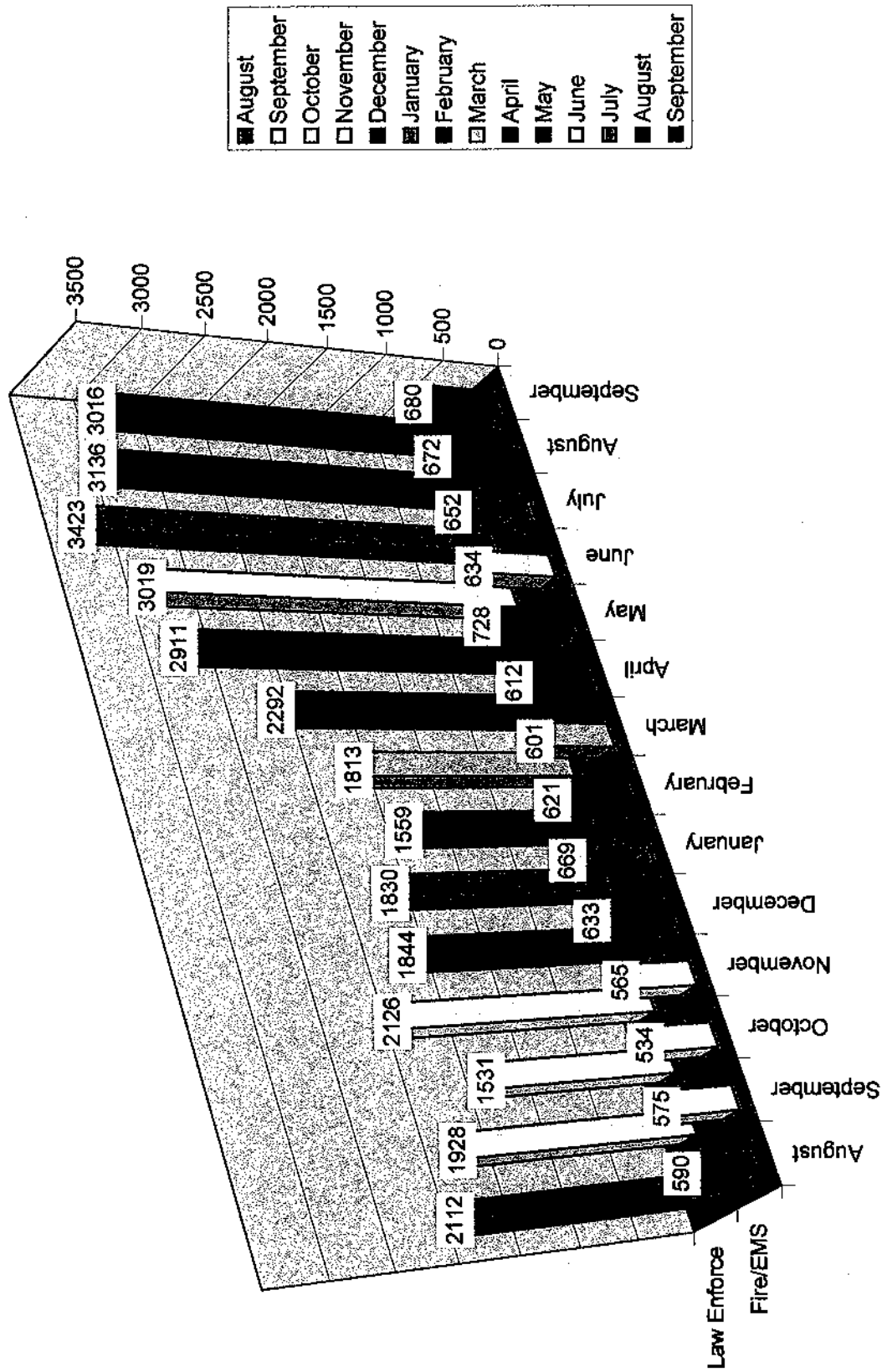
Attachments

10/3/2003

Confidential

1

CAD Response August 2002 to September 2003



- August
- September
- October
- November
- December
- January
- February
- March
- April
- May
- June
- July
- August
- September

Board Memo

Date: 10/2/2003

To: The Honorable Dennis Powell, Chair and Honorable Members of the ETSB

Cc: File

From: W. H. Gamblin, E9-1-1 Administrator

RE: Monthly Report

Please find attached the Resolution and call statistics for the Month of September.

Respectfully submitted,

William Gamblin

WHG

Attachments

10/2/2003

Confidential

1

SEPTEMBER, 2003

**ERROR
NO ALI**

| NUMBER CORRECTED TESTED COMPLETE | | | |
|----------------------------------|---|---|---|
| 7 | 7 | 4 | 4 |

NO ANI

| NUMBER CORRECTED TESTED COMPLETE | | | |
|----------------------------------|--|--|--|
| | | | |

INCORRECT ADDRESS

| NUMBER CORRECTED TESTED COMPLETE | | | |
|----------------------------------|----|---|---|
| 12 | 12 | 7 | 7 |

MSAG-STREET RANGE/COMMUNITY

| NUMBER CORRECTED TESTED COMPLETE | | | |
|----------------------------------|---|--|---|
| 7 | 7 | | 7 |

**ASSIGNED ADDRESSES-UNINCORPORATED
NEW ROADS (NEW MSAG LISTING)**

| |
|----|
| 11 |
| 10 |

**TOTAL ERRORS
TOTAL ERRORS CLEARED**

| |
|----|
| 26 |
| 18 |

ERROR REPORT (MONTHLY)
COMMUNITY

| COMMUNITY | RESIDENTIAL | BUSINESS | TOTAL ERRORS | DATA | #CORRECTED | ERROR TYPE |
|--------------|-------------|----------|--------------|------|------------|------------|
| ANCHOR | 0 | 0 | 0 | 1 | | |
| ARROWSMITH | 0 | 0 | 0 | 1 | | |
| BELLFLOWER | 1 | 0 | 1 | 2 | 1 | 1-COMM* |
| BLOOMINGTON | 2 | 16 | 18 | 42 | 1 | 1-MSAG* |
| CARLOCK | 0 | 0 | 0 | 3 | | |
| CHENOA | 0 | 1 | 1 | 4 | | |
| COLFAX | 3 | 0 | 3 | | 3 | 3-RSD* |
| COOKSVILLE | 0 | 0 | 0 | | | |
| CROPSY | 0 | 0 | 0 | 2 | | |
| DANVERS | 1 | 1 | 2 | 1 | | |
| DOWNES | 1 | 1 | 2 | 2 | | |
| EL PASO | 0 | 0 | 0 | 1 | | |
| ELLSWORTH | 0 | 1 | 1 | 2 | | |
| GRIDLEY | 0 | 0 | 0 | | | |
| HEYWORTH | 0 | 0 | 0 | 1 | | |
| HUDSON | 2 | 1 | 3 | 1 | | |
| LERoy | 7 | 0 | 7 | 5 | | |
| LEXINGTON | 4 | 0 | 4 | 5 | | |
| MANSFIELD | 0 | 0 | 0 | 1 | | |
| MCLEAN | 0 | 1 | 1 | | | |
| MINIER | 0 | 0 | 0 | | | |
| NORMAL | 0 | 6 | 6 | 7 | 1 | 1-RSD* |
| SAYBROOK | 1 | 0 | 1 | 5 | | |
| SHIRLEY | 0 | 2 | 2 | 1 | | |
| STANFORD | 2 | 0 | 2 | | 2 | 2-RSD* |
| TOWANDA | 0 | 0 | 0 | 1 | | |
| OTHER | 1 | 0 | 1 | | | |
| TOTAL ERRORS | 25 | 30 | 55 | 88 | 8 | |

*NO STREET NAME = NSN
 *MSAG PROBLEM = MSAG
 *NEED 911 ADDRESS = N811
 *CITY JURISDICTION = CJ
 *CELL TOWER = CT
 *REMOVE STREET DIRECTIONAL = RSD
 *COMMUNITY ERROR=COMM
 *NUMBER DISCONNECTED=ND
 *WRONG COUNTY=WC
 *DATA LINE = DL
 *SPELLING ERROR = SP

ERRORS AS OF AUGUST 31, 2003 47
 NEW ERRORS FOR SEPTEMBER 8
 ERRORS CORRECTED IN SEPTEMBER 8
 ERRORS AS OF SEPTEMBER 30, 2003 47
 DATA LINES 88
 ILLINOIS STATE UNIVERSITY 69

November 3, 2003

McLean County Board
Justice and Public Safety Committee
Bloomington, IL 61701

Re: Monthly Caseload – MONTH ENDING SEPTEMBER 30, 2003

Dear Committee Members:

Pursuant to statute, I am forwarding this report to your attention and I am causing a copy to be filed with the Circuit Clerk's office of McLean County.

During the above-mentioned time period, in the discharge of our duties to indigent persons in McLean County we have been assigned the following new cases in the area set forth. The activities in which we are involved differ in no substantial manner from those which have earlier been reported.

| CASE TYPES | MONTHLY TOTALS 2002 | MONTHLY TOTALS 2003 | YTD TOTALS 2002 | YTD TOTALS 2003 | % CHANGE YTD |
|----------------------------------|---------------------------|---------------------------|-----------------------|-----------------------|--------------------|
| FELONIES | 94 | 90 | 816 | 731 | <10%> |
| MISDEMEANORS | 102 | 111 | 904 | 896 | <1%> |
| DUI | 16 | 22 | 225 | 200 | <11%> |
| TRAFFIC | 58 | 92 | 662 | 728 | 10% |
| JUVENILE | 33 | 34 | 248 | 180 | <27%> |
| (DELINQUENT) | 12 | 10 | 112 | 75 | <33%> |
| (ABUSE/NEGLECT) | 21 | 24 | 136 | 105 | <28%> |
| MENTAL HEALTH CASES | 0 | 1 | 0 | 15 | |
| POST-CONVICTION & SVPKA CASES | 0 | 1 | 5 | 8 | 38% |
| TOTAL | 303 | 351 | 2,860 | 2,758 | <4%> |

Following are the caseload assignments to each of the full-time and contract attorneys for the reporting month of: **MONTH ENDING September 30, 2003**

| CASE TYPE | PUBLIC DEFENDER ATTORNEYS | YTD TOTALS | NEW MONTHLY TOTALS | NEW PTR/REVIEW TOTALS |
|-----------|---------------------------|------------|--------------------|-----------------------|
| F | TRACY SMITH | 93 | 17 | 3 |
| F | JAMES TUSEK | 93 | 10 | 4 |
| F | RONALD LEWIS | 93 | 18 | 7 |
| F | BRIAN MCELDFOWNEY | 92 | 11 | 4 |
| M | CARLA BARNES | 378 | 54 | 0 |
| F | CARLA BARNES | 71 | 6 | 4 |
| M | ROBERT KEIR | 510 | 57 | 4 |
| F | ROBERT KEIR | 34 | 0 | 0 |
| DUI | ANTHONY ORTEGA | 181 | 22 | 3 |
| F | ANTHONY ORTEGA | 32 | 2 | 0 |
| F | JOHN WRIGHT-C | 58 | 7 | 0 |
| F | LEE ANN HILL-C | 59 | 8 | 0 |
| F | TONY TOMKIEWICZ-C | 59 | 7 | 0 |
| TR | DAWN NATION | 619 | 92 | 1 |
| J | JON MCPHEE | 61 | 12 | 0 |
| J | ART FELDMAN | 65 | 10 | 5 |
| J | KELLY CAVANAUGH | 52 | 12 | 0 |
| J | ALAN NOVICK-C | 3 | 0 | 0 |
| PC/SVP | DAVID BUTLER-C | 8 | 1 | 0 |
| PVT | PRIVATE COUNSEL | 283 | 28 | 0 |
| W/D | WITHDRAWN | 26 | 4 | 0 |
| | | | | |

PTR= Petition to Revoke Probation

F = Felony

J = Juvenile

O = Other

P.C.=Post Conviction Remedy Cases

C= Contract Attorney (6-7 Cases per Month)

DUI= DUI

TR= Traffic

M= Misdemeanor

DATE: November 3, 2003

TO: Justice Committee

FROM: Amy Johnson Davis

RE: Monthly Report

SEPTEMBER 2003 DISPOSITION

| DISPOSITION | FELONY | MISDEMEANOR | TRAFFIC / DUI |
|-----------------------|--------|-------------|---------------|
| PLEA / ORIGINAL OFFER | 22 | 52 | 32 |
| PLEA / LESSER | 10 | 11 | 31 |
| BENCH TRIAL / WIN | 0 | 0 | 0 |
| BENCH TRIAL / LOSS | 0 | 0 | 1 |
| JURY TRIAL / WIN | 0 | 0 | 0 |
| JURY TRIAL / LOSS | 2 | 0 | 0 |
| DISMISSED / UPFRONT | 2 | 5 | 15 |
| DISMISSED / TRIAL | 4 | 11 | 2 |
| KNOCKDOWN | 4 | 0 | 0 |
| DISMISSED PER PLEA | 2 | 7 | 4 |
| PRIVATE COUNSEL | 15 | 7 | 6 |
| PLEA / BLIND | 9 | 0 | 0 |
| REFILED AS FELONY | N/A | 1 | 3 |
| WITHDRAWN | 0 | 4 | 0 |
| DIRECTED VERDICT | 0 | 0 | 0 |
| P.D. DENIED | 4 | 4 | 0 |
| | | | |

REPORT A
ACTIVITY OF ALL CIVIL CASES
DURING THE MONTH OF SEPTEMBER 2003
IN THE CIRCUIT COURT OF THE 11th JUDICIAL CIRCUIT
McLEAN COUNTY

| CATEGORY | BEGIN PENDING | CODE | NEW FILED | REINSTATED | DISPOSED | END PENDING 2003 | END PENDING 2002 |
|-----------------------------|---------------|------|-----------|------------|----------|------------------|------------------|
| Adoption | 21 | AD | 10 | 0 | 5 | 26 | 26 |
| Arbitration | 361 | AR | 53 | 10 | 80 | 344 | 519 |
| Chancery | 197 | CH | 19 | 0 | 28 | 188 | 183 |
| Dissolution of Marriage | 571 | D | 62 | 0 | 48 | 585 | 537 |
| Eminent Domain | 2 | ED | 0 | 0 | 0 | 2 | 5 |
| Family | 218 | F | 37 | 0 | 17 | 238 | 150 |
| Law => \$50,000 - Jury | 259 | L | 1 | 0 | 7 | 253 | 271 |
| Law = > \$50,000 - Non-Jury | 140 | L | 9 | 0 | 5 | 144 | 128 |
| Law = < \$50,000 - Jury | 16 | LM | 0 | 0 | 0 | 16 | 23 |
| Law = < \$50,000 - Non-Jury | 235 | LM | 74 | 4 | 78 | 235 | 240 |
| Municipal Corporation | 0 | MC | 0 | 0 | 0 | 0 | 0 |
| Mental Health | 8 | MH | 7 | 0 | 4 | 11 | 4 |
| Miscellaneous Remedy | 156 | MR | 30 | 0 | 24 | 162 | 133 |
| Order of Protection | 16 | OP | 10 | 0 | 13 | 13 | 20 |
| Probate | 1,113 | P | 24 | 0 | 11 | 1,126 | 1,086 |
| Small Claim | 650 | SC | 212 | 30 | 229 | 663 | 698 |
| Tax | 10 | TX | 0 | 0 | 0 | 10 | 12 |
| TOTAL CIVIL | 3,973 | | 548 | 44 | 549 | 4,016 | 4,035 |

REPORT B
 ACTIVITY OF ALL CRIMINAL CASES DURING THE MONTH OF SEPTEMBER 2003
 IN THE CIRCUIT COURT OF THE 11th JUDICIAL CIRCUIT
 McLEAN COUNTY

| | BEGIN PENDING | CODE | NEW FILED | NO. OF DEFTS. NEW | REINSTATED | DISPOSED | END PENDING 2003 | END PENDING 2002 |
|-------------------------|------------------|------|--------------|-------------------------|------------|----------|------------------------|------------------------|
| CONTEMPT OF COURT | 6 | C.C. | 1 | 1 | 0 | 0 | 7 | 2 |
| CRIMINAL FELONY | 828 | CF | 124 | 124 | 0 | 92 | 860 | 956 |
| CRIMINAL MISDEMEANOR | 1,151 | CM | 163 | 163 | 0 | 180 | 1,134 | 1,146 |
| TOTAL CRIMINAL | 1,985 | | 288 | 288 | 0 | 272 | 2,001 | 2,104 |

REPORT C
 ACTIVITY OF ALL JUVENILE CASES
 DURING THE MONTH OF SEPTEMBER 2003
 IN THE CIRCUIT COURT OF THE 11th JUDICIAL CIRCUIT
 McLEAN COUNTY

| CATEGORY | BEGIN PENDING | CODE | NEW FILED | NO. OF DEFTS. NEW | REINSTATED | DISPOSED | END PENDING 2003 | END PENDING 2002 |
|--------------------------|---------------|------|-----------|-------------------|------------|----------|------------------|------------------|
| JUVENILE | 38 | J | 0 | 0 | 0 | 3 | 35 | 50 |
| JUVENILE ABUSE & NEGLECT | 183 | JA | 15 | 27 | 0 | 6 | 192 | 188 |
| JUVENILE DELINQUENT | 95 | JD | 9 | 9 | 6 | 19 | 91 | 136 |
| TOTAL JUVENILE | 316 | | 24 | 36 | 6 | 28 | 318 | 374 |

REPORT D
 ACTIVITY OF ALL DUI/TRAFFIC/CONSERVATION/ORDINANCE CASES
 DURING THE MONTH OF SEPTEMBER 2003
 IN THE CIRCUIT COURT OF THE 11th JUDICIAL CIRCUIT
 McLEAN COUNTY

| CATEGORY | BEGIN PENDING | CODE | NEW FILED | REINSTATED | DISPOSED | END PENDING 2003 | END PENDING 2002 |
|-----------------------------|---------------|------|-----------|------------|----------|------------------|------------------|
| CONSERVATION VIOLATION | 21 | CV | 5 | 0 | 5 | 21 | 37 |
| DRIVING UNDER THE INFLUENCE | 427 | DT | 84 | 0 | 72 | 439 | 428 |
| ORDINANCE VIOLATION | 840 | OV | 195 | 0 | 176 | 859 | 787 |
| TRAFFIC VIOLATION | 21,093 | TR | 3,249 | 0 | 4,122 | 20,220 | 16,545 |
| TOTALS: | 22,381 | | 3,533 | 0 | 4,375 | 21,539 | 17,797 |

REPORT F
DISPOSITION OF DEFENDANTS CHARGED WITH FELONIES⁽¹⁾
DURING THE MONTH OF SEPTEMBER 2003
IN THE CIRCUIT COURT OF THE 11TH JUDICIAL CIRCUIT
MCLEAN COUNTY

| | | NOT CONVICTED | | | | | CONVICTED | | | TOTAL DEFENDANTS DISPOSED OF | | |
|----|--|---------------|--------|------------------------|-----------|----------|--------------|------------|-------------|------------------------------|-------------|------------|
| | | NOLLE | S.O.L. | REDUCED TO MISDEMEANOR | DISMISSED | OTHER(2) | ACQUITTED BY | | GUILTY PLEA | | BENCH TRIAL | JURY TRIAL |
| | | | | | | | BENCH TRIAL | JURY TRIAL | | | | |
| 14 | | 0 | 6 | 1 | 0 | 0 | 0 | 1 | 67 | 1 | 2 | 92 |

(1) NOT NECESSARILY DIFFERENT DEFENDANTS

(2) INCLUDES COURT ACTION: NO BILL, TRANSFERRED/NO JURISDICTION, DEATH SUGGESTED/CAUSE ABATED, UNFIT TO STAND TRIAL, SEXUALLY DANGEROUS, TRANSFERS TO WARRANT CALENDAR, AND EXTRADITION PROCEEDING FILED AS A FELONY.

REPORT F
DISPOSITION OF DEFENDANTS CHARGED WITH FELONIES⁽¹⁾
THROUGH THE MONTH OF SEPTEMBER, 2003
IN THE CIRCUIT COURT OF THE 11TH JUDICIAL CIRCUIT
McLEAN COUNTY

| | NOT CONVICTED | | | | | | | CONVICTED | | | TOTAL DEFENDANTS DISPOSED OF |
|-------|---------------|--------|------------------------|-----------|----------|--------------|------------|-------------|-------------|------------|------------------------------|
| | NOLLE | S.O.L. | REDUCED TO MISDEMEANOR | DISMISSED | OTHER(2) | ACQUITTED BY | | GUILTY PLEA | BENCH TRIAL | JURY TRIAL | |
| | | | | | | BENCH TRIAL | JURY TRIAL | | | | |
| JAN | 29 | 0 | 34 | 0 | 0 | 0 | 2 | 93 | 1 | 3 | 162 |
| FEB | 19 | 0 | 19 | 0 | *2 | 2 | 2 | 73 | 1 | 2 | 120 |
| MAR | 11 | 0 | 13 | 0 | 0 | 0 | 1 | 65 | 0 | 0 | 90 |
| APR | 28 | 0 | 19 | 0 | 1* | 2 | 1 | 87 | 0 | 2 | 140 |
| MAY | 16 | 0 | 21 | 0 | 0 | 0 | 1 | 63 | 1 | 2 | 104 |
| JUNE | 16 | 0 | 8 | 1 | 0 | 1 | 0 | 55 | 5 | 2 | 88 |
| JULY | 24 | 0 | 16 | 1 | 0 | 0 | 2 | 71 | 0 | 0 | 114 |
| AUG | 23 | 0 | 7 | 1 | 0 | 1 | 1 | 89 | 0 | 1 | 123 |
| SEPT | 14 | 0 | 6 | 1 | 0 | 0 | 1 | 67 | 1 | 2 | 92 |
| OCT | | | | | | | | | | | |
| NOV | | | | | | | | | | | |
| DEC | | | | | | | | | | | |
| TOTAL | 180 | 0 | 143 | 4 | 3 | 6 | 11 | 663 | 9 | 14 | 1,033 |

(1) NOT NECESSARILY DIFFERENT DEFENDANTS

(2) INCLUDES COURT ACTION: NO BILL, TRANSFERRED/NO JURISDICTION, DEATH SUGGESTED/CAUSE ABATED, UNFIT TO STAND TRIAL, SEXUALLY DANGEROUS, TRANSFERS TO WARRANT CALENDAR, AND EXTRADITION PROCEEDING FILED AS A FELONY.

*NOT GUILTY BY DIRECTED VERDICT

REPORT G
SENTENCE OF DEFENDANTS CHARGED WITH FELONIES
DURING THE MONTH OF JULY 2003
IN THE CIRCUIT COURT OF THE 11th JUDICIAL CIRCUIT
McLEAN COUNTY

TOTAL NUMBER OF DEFENDANTS CONVICTED OF FELONIES BY GUILTY PLEA, BENCH TRIAL AND JURY TRIAL (FROM REPORT F). THIS TOTAL MUST EQUAL THE NUMBER OF FELONY SENTENCES ON THE FELONY SENTENCE TABLE BELOW.

TOTAL NUMBER OF CONVICTED FELONIES: 70
(FROM REPORT F)

FELONY SENTENCE TABLE

| | CLASS M | CLASS X | CLASS 1 | CLASS 2 | CLASS 3 | CLASS 4 | TOTALS |
|----------------|----------|----------|----------|-----------|-----------|-----------|-----------|
| 1. DEATH | 0 | 0 | 0 | 0 | 0 | 0 | 0 |
| 2. LIFE | 0 | 0 | 0 | 0 | 0 | 0 | 0 |
| 3. IDOC | 0 | 1 | 2 | 8 | 7 | 6 | 24 |
| 4. PROBATION | 0 | 0 | 2 | 10 | 15 | 16 | 43 |
| 5. OTHER | 0 | 0 | 0 | 0 | 0 | 3 | 3 |
| TOTALS: | 0 | 1 | 4 | 16 | 22 | 25 | 70 |

* Conditional Discharge

REPORT H
ORDERS OF PROTECTON ISSUED
DURING THE MONTH OF SEPTEMBER 2003
IN THE CIRCUIT COURT OF THE 11th JUDICIAL CIRCUIT
McLEAN COUNTY

| | <u>EMERGENCY</u> | <u>INTERIM</u> | <u>PLENARY</u> |
|---------------|------------------|----------------|----------------|
| DIVORCE | 1 | 0 | 1 |
| FAMILY (OP) | 6 | 0 | 4 |
| CRIMINAL | 3 | 0 | 4 |
| TOTAL: | 10 | 0 | 9 |

REPORT A
ACTIVITY OF ALL CIVIL CASES
DURING THE THIRD QUARTER OF 2003
IN THE CIRCUIT COURT OF THE 11th JUDICIAL CIRCUIT
McLEAN COUNTY

| CATEGORY | BEGIN PENDING | CODE | NEW FILED | REINSTATED | DISPOSED | END PENDING 2003 | END PENDING 2002 |
|-----------------------------|---------------|------|--------------|------------|--------------|------------------|------------------|
| Adoption | 21 | AD | 20 | 0 | 15 | 26 | 26 |
| Arbitration | 363 | AR | 152 | 38 | 209 | 344 | 519 |
| Chancery | 200 | CH | 69 | 0 | 81 | 188 | 183 |
| Dissolution of Marriage | 553 | D | 162 | 0 | 130 | 585 | 537 |
| Eminent Domain | 1 | ED | 1 | 0 | 0 | 2 | 5 |
| Family | 194 | F | 111 | 0 | 67 | 238 | 150 |
| Law => \$50,000 - Jury | 265 | L | 14 | 0 | 26 | 253 | 271 |
| Law => \$50,000 - Non-Jury | 141 | L | 24 | 0 | 21 | 144 | 128 |
| Law = < \$50,000 - Jury | 16 | LM | 0 | 1 | 1 | 16 | 23 |
| Law = < \$50,000 - Non-Jury | 236 | LM | 213 | 12 | 226 | 235 | 240 |
| Municipal Corporation | 0 | MC | 0 | 0 | 0 | 0 | 0 |
| Mental Health | 9 | MH | 13 | 0 | 11 | 11 | 4 |
| Miscellaneous Remedy | 153 | MR | 53 | 0 | 44 | 162 | 133 |
| Order of Protection | 16 | OP | 39 | 0 | 42 | 13 | 20 |
| Probate | 1,101 | P | 77 | 0 | 52 | 1,126 | 1,086 |
| Small Claim | 642 | SC | 621 | 115 | 715 | 663 | 698 |
| Tax | 10 | TX | 0 | 0 | 0 | 10 | 12 |
| TOTAL CIVIL | 3,921 | | 1,569 | 166 | 1,640 | 4,016 | 4,035 |

REPORT B
ACTIVITY OF ALL CRIMINAL CASES
DURING THE THIRD QUARTER 2003
IN THE CIRCUIT COURT OF THE 11th JUDICIAL CIRCUIT
McLEAN COUNTY

| | BEGIN PENDING | CODE | NEW FILED | NO. OF DEFTS. NEW | REINSTATED | DISPOSED | END PENDING 2003 | END PENDING 2002 |
|-------------------------|------------------|------|--------------|-------------------------|------------|----------|------------------------|------------------------|
| CONTEMPT OF COURT | 3 | C.C. | 5 | 5 | 0 | 1 | 7 | 2 |
| CRIMINAL FELONY | 829 | CF | 359 | 359 | 1 | 329 | 860 | 956 |
| CRIMINAL MISDEMEANOR | 1,093 | CM | 548 | 548 | 0 | 507 | 1,134 | 1,146 |
| TOTAL CRIMINAL | 1,925 | | 912 | 912 | 1 | 837 | 2,001 | 2,104 |

REPORT C
ACTIVITY OF ALL JUVENILE CASES
DURING THE THIRD QUARTER 2003
IN THE CIRCUIT COURT OF THE 11th JUDICIAL CIRCUIT
McLEAN COUNTY

| CATEGORY | BEGIN PENDING | CODE | NEW FILED | NO. OF DEFTS. NEW | REINSTATED | DISPOSED | END PENDING 2003 | END PENDING 2002 |
|-------------------------------------|----------------------|-------------|------------------|--------------------------|-------------------|-----------------|-------------------------|-------------------------|
| JUVENILE | 44 | J | 0 | 0 | 0 | 9 | 35 | 50 |
| JUVENILE ABUSE & NEGLECT | 189 | JA | 29 | 50 | 0 | 26 | 192 | 188 |
| JUVENILE DELINQUENT | 90 | JD | 27 | 27 | 17 | 43 | 91 | 136 |
| TOTAL JUVENILE | 323 | | 56 | 77 | 17 | 78 | 318 | 374 |

REPORT D
ACTIVITY OF ALL DUI/TRAFFIC/CONSERVATION/ORDINANCE CASES
DURING THE 3rd QUARTER 2003
IN THE CIRCUIT COURT OF THE 11th JUDICIAL CIRCUIT
McLEAN COUNTY

| CATEGORY | BEGIN PENDING | CODE | NEW FILED | REINSTATED | DISPOSED | END PENDING 2003 | END PENDING 2002 |
|-----------------------------|---------------|------|-----------|------------|----------|------------------|------------------|
| CONSERVATION VIOLATION | 22 | CV | 24 | 0 | 25 | 21 | 37 |
| DRIVING UNDER THE INFLUENCE | 424 | DT | 217 | 0 | 202 | 439 | 428 |
| ORDINANCE VIOLATION | 793 | OV | 451 | 0 | 385 | 859 | 787 |
| TRAFFIC VIOLATION | 21,505 | TR | 9,779 | | 11,064 | 20,220 | 16,545 |
| TOTALS: | 22,744 | | 10,471 | 0 | 11,676 | 21,539 | 17,797 |

REPORT NO. E
TIME LAPSE OF ALL CASES DISPOSED OF BY JURY VERDICT
IN ALL CATEGORIES
DURING THE THIRD QUARTER OF 2003
IN THE CIRCUIT COURT OF THE 11th JUDICIAL CIRCUIT
McLEAN COUNTY

| CASE NUMBER | FILING DATE | DATE OF VERDICT |
|-------------|-------------|-----------------|
| 01 MR 207 | 11/15/01 | 7/18/03 |
| 03 CF 318 | 03/31/03 | 07/15/03 |
| 00 CF 919 | 07/28/00 | 07/16/03 |
| 03 CF 505 | 05/27/03 | 07/22/03 |
| 03 CF 349 | 04/10/03 | 07/22/03 |
| 02 DT 680 | 10/15/02 | 8/12/03 |
| 02 TR 26877 | 12/2/02 | 8/12/03 |
| 03 TR 2021 | 1/30/03 | 8/15/03 |
| 02 CF 952 | 8/15/02 | 8/13/03 |
| 03 CF 278 | 3/20/03 | 8/12/03 |
| 02 CM 1938 | 10/24/02 | 8/12/03 |
| 02 CF 1276 | 10/25/02 | 8/21/03 |
| 03 CF 468 | 5/13/03 | 9/10/03 |
| 03 CF 361 | 4/14/03 | 9/17/03 |
| 03 CF 458 | 5/12/03 | 9/24/03 |
| 02 L 29 | 2/22/02 | 9/9/03 |
| 03 MH 51 | 8/25/03 | 9/15/03 |

NOTE: THIS REPORT SHOULD NOT INCLUDE ANY REINSTATED CASES UNLESS TIME-LAPSE IS COMPUTED FROM DATE OF REINSTATEMENT.

REPORT F
DISPOSITION OF DEFENDANTS CHARGED WITH FELONIES⁽¹⁾
DURING THE THIRD QUARTER 2003
IN THE CIRCUIT COURT OF THE 11TH JUDICIAL CIRCUIT
MCLEAN COUNTY

| NOT CONVICTED | | | | | | CONVICTED | | | TOTAL DEFENDANTS DISPOSED OF | |
|---------------|--------|---------------------------|-----------|----------|----------------|---------------|----------------|----------------|------------------------------------|---------------|
| NOLLE | S.O.L. | REDUCED TO MISDEMEANOR | DISMISSED | OTHER(2) | ACQUITTED BY | | GUILTY PLEA | BENCH TRIAL | | JURY TRIAL |
| | | | | | BENCH TRIAL | JURY TRIAL | | | | |
| 61 | 0 | 29 | 3 | 0 | 1 | 4 | 227 | 1 | 3 | 329 |

(1) NOT NECESSARILY DIFFERENT DEFENDANTS
(2) INCLUDES COURT ACTION: NO BILL, TRANSFERRED NO JURISDICTION, DEATH SUGGESTED/CAUSE ABATED, UNFIT TO STAND TRIAL, SEXUALLY DANGEROUS, TRANSFERS TO WARRANT CALENDAR, AND EXTRADITION PROCEEDING FILED AS A FELONY.

REPORT G
SENTENCE OF DEFENDANTS CHARGED WITH FELONIES
DURING THE THIRD QUARTER OF 2003
IN THE CIRCUIT COURT OF THE 11th JUDICIAL CIRCUIT
McLEAN COUNTY

TOTAL NUMBER OF DEFENDANTS CONVICTED OF FELONIES BY GUILTY PLEA, BENCH TRIAL AND JURY TRIAL (FROM REPORT F). THIS TOTAL MUST EQUAL THE NUMBER OF FELONY SENTENCES ON THE FELONY SENTENCE TABLE BELOW.

TOTAL NUMBER OF CONVICTED FELONIES: 231
(FROM REPORT F)

FELONY SENTENCE TABLE

| | CLASS M | CLASS X | CLASS 1 | CLASS 2 | CLASS 3 | CLASS 4 | TOTALS |
|----------------|---------|---------|---------|---------|---------|---------|--------|
| 1. DEATH | 0 | 0 | 0 | 0 | 0 | 0 | 0 |
| 2. LIFE | 0 | 0 | 0 | 0 | 0 | 0 | 0 |
| 3. IDOC | 0 | 2 | 13 | 21 | 28 | 35 | 99 |
| 4. PROBATION | 0 | 0 | 7 | 20 | 42 | 58 | 127 |
| 5. OTHER | 0 | 0 | 0 | 0 | 0 | 5 | 5 |
| TOTALS: | 0 | 2 | 20 | 41 | 70 | 98 | 231 |

REPORT H
ORDERS OF PROTECTION ISSUED :
DURING THE THIRD QUARTER OF 2003
IN THE CIRCUIT COURT OF THE 11th JUDICIAL CIRCUIT
McLEAN COUNTY

| | <u>EMERGENCY</u> | <u>INTERIM</u> | <u>PLENARY</u> |
|---------------|------------------|----------------|----------------|
| DIVORCE | 3 | 0 | 2 |
| FAMILY (OP) | 27 | 2 | 7 |
| CRIMINAL | 5 | 1 | 9 |
| TOTAL: | 35 | 3 | 18 |



McLEAN COUNTY SHERIFF'S DEPARTMENT
DAVID OWENS, SHERIFF
"Peace Through Integrity"
Administration Office
(309) 888-5034
104 W. Front Law & Justice Center Room 105
P.O. Box 2400 Bloomington, Illinois 61702-2400

Detective Commander (309) 888-5051
Patrol Commander (309) 888-5166
Patrol Duty Sergeant (309) 888-5019
Jail Division (309) 888-5065
Process Division (309) 888-5040
Records Division (309) 888-5055
Domestic Crimes Division (309) 888-5860
FAX (309) 888-5072

October 28, 2003

TO: Mr. Tari Renner, Chairman
Justice Committee
FROM: Sheriff David Owens
SUBJ: NOVEMBER 3RD, 2003 JUSTICE COMMITTEE AGENDA

Dear Chairman Renner:

I would respectfully request that the following item be placed on the November 3rd, 2003 Justice Committee Agenda for information only.

Information

- 1) McLean County Detention Facility Population Report:** (Please see attached).

If you have any questions, prior to the meeting, please feel free to contact me.

Sincerely,

David Owens
Sheriff

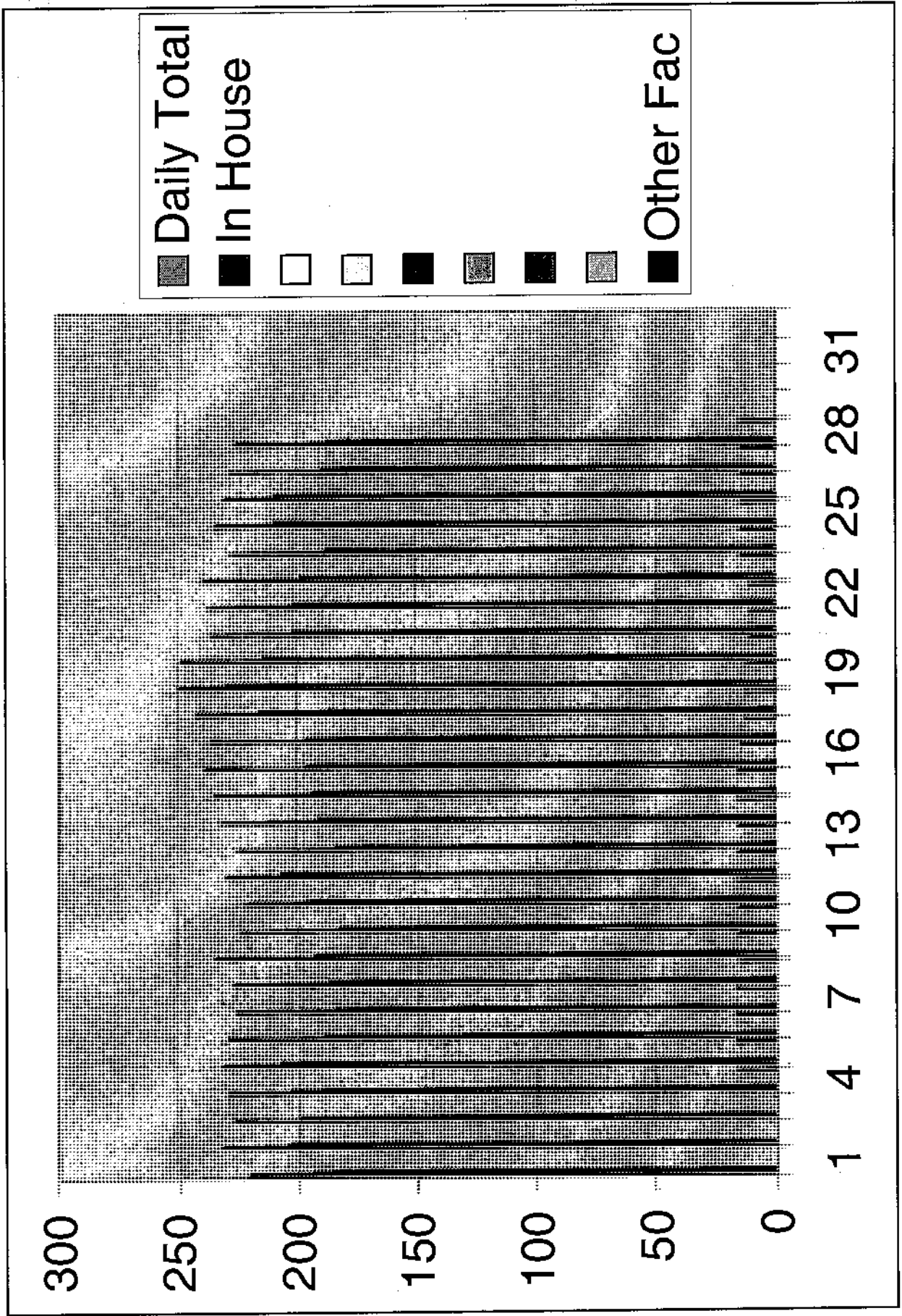
DO:jc

MCDF
Population
October
2003

| Date | Daily Total | In House | Male | Female | Sp. Needs | St. Sentence | Work Release | Weekends | Other Fac |
|-----------------------------------|-------------|----------|---------|--------|-----------|--------------|--------------|----------|-----------|
| 1 | 221 | 194 | 193 | 28 | 17 | 45 | 11 | 21 | 0 |
| 2 | 232 | 204 | 200 | 32 | 31 | 52 | 13 | 21 | 0 |
| 3 | 227 | 199 | 195 | 32 | 24 | 52 | 12 | 21 | 1 |
| 4 | 230 | 203 | 196 | 34 | 18 | 62 | 13 | 23 | 17 |
| 5 | 232 | 208 | 198 | 34 | 20 | 57 | 13 | 21 | 17 |
| 6 | 229 | 189 | 196 | 33 | 21 | 55 | 12 | 21 | 17 |
| 7 | 226 | 185 | 194 | 32 | 15 | 57 | 12 | 21 | 17 |
| 8 | 227 | 187 | 195 | 32 | 13 | 54 | 12 | 21 | 16 |
| 9 | 235 | 193 | 200 | 35 | 15 | 55 | 12 | 21 | 16 |
| 10 | 225 | 183 | 187 | 38 | 15 | 57 | 13 | 21 | 16 |
| 11 | 222 | 198 | 192 | 30 | 16 | 60 | 12 | 21 | 16 |
| 12 | 230 | 207 | 197 | 33 | 16 | 59 | 12 | 22 | 16 |
| 13 | 225 | 184 | 188 | 37 | 15 | 57 | 12 | 21 | 16 |
| 14 | 233 | 192 | 196 | 37 | 14 | 59 | 12 | 21 | 16 |
| 15 | 235 | 194 | 201 | 34 | 13 | 60 | 13 | 21 | 16 |
| 16 | 239 | 197 | 204 | 35 | 17 | 62 | 14 | 21 | 15 |
| 17 | 237 | 197 | 203 | 34 | 18 | 61 | 14 | 21 | 13 |
| 18 | 243 | 216 | 210 | 33 | 23 | 63 | 14 | 22 | 13 |
| 19 | 250 | 230 | 214 | 36 | 30 | 62 | 14 | 22 | 12 |
| 20 | 249 | 215 | 214 | 35 | 21 | 57 | 14 | 22 | 11 |
| 21 | 236 | 202 | 204 | 32 | 15 | 57 | 14 | 22 | 11 |
| 22 | 237 | 203 | 204 | 33 | 17 | 55 | 14 | 22 | 11 |
| 23 | 240 | 199 | 208 | 32 | 23 | 54 | 13 | 22 | 15 |
| 24 | 228 | 188 | 197 | 31 | 17 | 52 | 14 | 22 | 15 |
| 25 | 235 | 210 | 202 | 33 | 19 | 53 | 13 | 25 | 15 |
| 26 | 231 | 210 | 200 | 31 | 17 | 51 | 13 | 24 | 15 |
| 27 | 229 | 190 | 195 | 34 | 15 | 49 | 13 | 24 | 15 |
| 28 | 226 | 188 | 194 | 32 | 14 | 48 | 13 | 24 | 15 |
| 29 | | | | | | | | | |
| 30 | | | | | | | | | |
| 31 | | | | | | | | | |
| Total | 6509.00 | 5563.00 | 5577.00 | 932.00 | 509.00 | 1585.00 | 381.00 | 811.00 | 373.00 |
| Average for October 2003 | 232.48 | 198.68 | 199.18 | 33.29 | 18.18 | 55.89 | 12.89 | 21.82 | 13.32 |

MCDF Average Population
Six Month Comparison

| Month | May 2003 | June 2003 | July 2003 | August 2003 | Sept 2003 | October 2003 | Average |
|----------------------|-------------|--------------|--------------|----------------|--------------|-----------------|---------|
| Daily Total | 208.50 | 202.07 | 178.19 | 200.40 | 220.13 | 232.46 | 206.96 |
| In House | 186.80 | 113.71 | 70.16 | 173.60 | 195.23 | 198.68 | 156.36 |
| Male | 178.30 | 173.71 | 153.58 | 179.70 | 190.63 | 199.18 | 179.18 |
| Female | 30.10 | 28.36 | 24.61 | 20.70 | 29.50 | 33.29 | 27.76 |
| Special Needs | 17.30 | 16.37 | 7.52 | 16.90 | 18.63 | 18.18 | 15.82 |
| Straight Sentence | 50.80 | 44.11 | 26.13 | 34.90 | 43.80 | 55.89 | 42.61 |
| Work Release | 8.50 | 9.84 | 6.71 | 9.30 | 10.77 | 12.89 | 9.67 |
| Weekenders | 21.80 | 19.95 | 17.71 | 23.80 | 27.00 | 21.82 | 22.01 |
| Other Facilities | 2.10 | 58.25 | 59.23 | 00.00 | 00.00 | 13.32 | 22.15 |





COPY

BETH C. KIMMERLING, RN, MFS
ABMDI
CORONER
Office (309) 888-5210
FAX (309) 888-5090
104 W. Front

P.O. Box 2400

Bloomington, Illinois 61702-2400

October 17, 2003

Mr. Dan Heinz
306 East Seneca Place
Peoria, IL 61603


Dear Mr. Heinz,

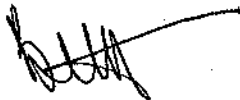
During the budget preparation process for fiscal year 2004, I reviewed the history of the morgue facility fee, in addition to the list of services McLean County provides for this fee. Upon completion of this cost-benefit analysis, it was determined that the \$225 morgue facility fee was not covering McLean County's costs associated with providing an out of county autopsy service to you. In an effort to align the two figures, the morgue facility fee will increase to \$250 as of January 1, 2004. It has been three years since McLean County implemented an increase in this area.

Enclosed please find a two-page morgue use cost sheet. This document provides you with an explanation of what services are included in the morgue facility fee, as well as a break down of all the costs associated with providing autopsy services.

Please realize I understand the impact this change will have on already tight budgets.

Thank you.

Regards,



Beth C. Kimmerling
Coroner

COPY

2004 Out of County Morgue Use Fees

The McLean County Coroner's Office (MCCO), located in Bloomington, Illinois, is a fully equipped regional morgue facility, providing autopsy and related examination services in the field of death investigation. Autopsies are performed by a board certified Forensic Pathologist.

Forensic Autopsy Examination Cost

| | |
|----------------------|-------|
| Forensic Pathologist | |
| Dr. Bryan Mitchell | \$675 |
| Dr. Scott Denton | \$750 |
| Assistant | |
| William K. Belcher | \$125 |
| Morgue Facility Fee | \$250 |

Includes use of the facility, clerical staff, postage, photocopying, histology services, photographs, replacement body bag, morgue cleaning, laundry service, transcription service, biohazard disposal, body storage, and supplies.

Total \$1,050 to \$1,125

Radiology

In the event that your case requires x-rays, the McLean County morgue is fully equipped with the proper equipment and developer on site. The MCCO will provide certified x-ray technicians to take the required films.

| | |
|----------------------------|---|
| Certified X-ray Technician | \$60.00 |
| Film (each) | \$15.00 |
| Total | \$ 60.00 + (number of films taken x \$15) |

COPY

Toxicology

Each county coroner's office using the McLean County morgue is responsible for choosing its own laboratory for toxicology testing and agrees to pay any charges incurred by the laboratory for analysis. The MCCO will prepare the toxicology for shipment. A coroner may use his or her own discretion to determine the shipping source. As always, toxicology specimens may be retained by the county coroner of origin and shipped via his or her office.

Photographs

For each case entering the McLean County facility, a routine series of identification photos will be taken. The pathologist and his assistant also take a complete set of autopsy photos. These photos along with the respective negatives are delivered to the originating county coroner's office. There is no extra charge for this service.

Transportation

The MCCO no longer provides routine removal service for bordering counties. In the event of an emergent need for transportation assistance, the McLean County Coroner will evaluate this need, as well as the distance involved, before allowing the McLean County removal van to provide transport service. It will be the responsibility of the bordering county coroner to arrange transportation of the decedent from the McLean County facility.

| | |
|---------|----------------------|
| Removal | \$100.00 per removal |
|---------|----------------------|

Independent (Private) Autopsy

A private autopsy may be arranged at the discretion of the McLean County Forensic Pathologist. The Forensic Pathologist will determine the fee for this service.

Contacting the MCCO

The MCCO is open from 8:00 am until 4:30 pm, Monday through Friday. After regular business hours, our telephone is answered by the 9-1-1 communication center (MetCom). Please ask the dispatcher to page the on-call Deputy Coroner. He or she will return your call and assist you in arranging pathology services for your county.

**Office of the Coroner
McLean County
SEPTEMBER 2003 REPORT**

| | SEPT. 2003 | SEPT. 2002 | TYTD 2003 | LYTD 2002 |
|-----------------------------|-------------------|-------------------|------------------|------------------|
| <i>Cases</i> | 78 | 57 | 606 | 556 |
| <i>Autopsies</i> | 11 | 10 | 81 | 84 |
| <i>Out/County Autopsies</i> | 30 | 11 | 184 | 102 |
| <i>Inquests</i> | 8 | 6 | 49 | 54 |

TOTAL DEPOSITS

| | BUDGET | ACTUAL |
|--------------------------------|--------------------|--------------------|
| <i>Copy Fees</i> | \$6,000.00 | \$6865.00 |
| <i>Morgue Fees</i> | \$18,750.00 | \$36,517.88 |
| <i>Reim/Services</i> | \$500.00 | \$44.97 |
| <i>Paid to Facilities Mgt.</i> | \$0 | \$8280.00 |

DEATH INVESTIGATIONS THAT INCLUDE AUTOPSY AND FOLLOW-UP

Traffic Crash – 0

Medical/Sudden death – 1

Homicide – 0

Other (pending tox. & autopsy results and/or inquest ruling) – 10

OPEN DEATH INVESTIGATIONS

Traffic Crash – 0

Homicide – 0

Medical/Sudden death – 1

Other/Pending - 15

**Intergovernmental Agreement of Cooperation
Between the McLean County State's Attorney
And
The Illinois Department of Public Aid**

SUMMARY

The Agreement addresses responsibilities of both parties arising under Title IV-D of the Federal Social Security Act relating to child support enforcement. Under Illinois law, the Department of Public Aid can contract with local State's Attorneys to handle legal responsibilities for child support cases usually handled by the Attorney General's Office.

The McLean County State's Attorney has operated a division under such an Agreement since February 1999. The proposed Agreement has a term commencing December 1, 2003 and terminating June 30, 2004. The terms of the proposed Agreement are substantially similar to those of prior Agreements.

Funding will be at the same level as the current Agreement, which terminates November 30, 2003. The Department of Public Aid has verbally committed to the funding, the appropriate level of funding has been incorporated into the draft Agreement and the State's Attorney has incorporated the appropriate level of funding into his FY2004 budget request. As in prior years, payment under the Agreement is by reimbursement with the State's Attorney submitting monthly expenditure reports to the Department.

Three elements of the proposed Agreement are currently being negotiated. The first such element addresses the level of production required by the State's Attorney in terms of the number of support orders obtained. We are seeking reciprocal language which would require a certain level of production by the Department in terms of the number of cases referred to the State's Attorney for court action.

The second such element addresses what sanction, if any, will be imposed upon the State's Attorney if the State's Attorney fails to perform at an appropriate level. The Department is suggesting that a financial sanction equal to a certain dollar amount be imposed if the State's Attorney does not obtain a minimum number of support orders. The State's Attorney is proposing that any sanction for insufficient production, whether monetary or contract renewal, be tied to a requirement on the Department that it produce an adequate number, or percentage, of case referrals.

The third such element addresses the number of days within which the State's Attorney must show proof of the entry of each child support order and the date by which the Department must provide the State's Attorney with a summary of such orders.

The State's Attorney anticipates that a final draft of the Agreement will be available to the Committee and the County Board for review prior to the November 18th Board meeting.

ASSET FORFEITURE FUND

STATEMENT OF REVENUE, EXPENDITURES AND FUND BALANCE

October 24, 2003

STATE'S ATTORNEY:

| | |
|---|-----------------|
| Beginning Balance 01/01/2003 | \$ -49,196.06 |
| (Reflects \$80,000 transfer to General Fund 12/31/02) | |
| Revenue | <u>3,320.25</u> |
| Total Funds Available | \$ -45,875.81 |
| Expenditures | <u>2,501.66</u> |
| Fund Balance 10/24/03 | \$ -48,377.47 |

SHERIFF:

| | |
|------------------------------|-----------------|
| Beginning Balance 01/01/2003 | \$ 45,759.23 |
| Revenue | <u>9,328.52</u> |
| Total Funds Available | \$55,087.75 |
| Expenditures | <u>2,725.00</u> |
| Fund Balance 10/24/03 | \$ 52,362.75 |

| | | |
|---------------------|------------------|-------------|
| TOTAL FUND BALANCE- | October 24, 2003 | \$ 3,985.28 |
|---------------------|------------------|-------------|

McLean County State's Attorney's Office 2003 Case Load Report

Jan. Feb. Mar. April May June July Aug. Sept. Oct. Nov. Dec. 2003 YTD 2002 YTD Total Projected 2003

CRIMINAL

| | | | | | | | | | | | | | | | | |
|------------------------|--------------|--------------|--------------|--------------|--------------|--------------|--------------|--------------|--------------|--------------|--|--|---------------|---------------|---------------|---------------|
| Felony | 105 | 74 | 143 | 92 | 92 | 99 | 104 | 122 | 122 | 102 | | | 1055 | 1303 | 1,539 | 1,295 |
| Misdemeanor | 150 | 138 | 167 | 146 | 208 | 212 | 126 | 253 | 153 | 166 | | | 1719 | 1965 | 2,355 | 2,112 |
| Asset Forfeiture | 6 | 12 | 3 | 3 | 15 | 4 | 5 | 15 | 5 | 15 | | | 83 | 85 | 98 | 102 |
| Family Totals | 34 | 56 | 53 | 38 | 39 | 39 | 42 | 61 | 39 | 52 | | | 453 | 356 | 425 | 556 |
| Family | 18 | 45 | 40 | 21 | 19 | 24 | 30 | 44 | 30 | 38 | | | 309 | 201 | 248 | 379 |
| Order of Protection | 16 | 11 | 13 | 17 | 20 | 15 | 12 | 17 | 9 | 14 | | | 144 | 155 | 177 | 176 |
| Juvenile Totals | 19 | 20 | 18 | 11 | 21 | 13 | 13 | 10 | 25 | 25 | | | 181 | 244 | 268 | 222 |
| Juvenile | 2 | 1 | 0 | 2 | 0 | 1 | 0 | 0 | 0 | 0 | | | 6 | 21 | 21 | 7 |
| Juvenile Abuse | 4 | 8 | 9 | 6 | 9 | 9 | 7 | 7 | 13 | 9 | | | 81 | 77 | 86 | 99 |
| Juvenile Delinquency | 13 | 11 | 9 | 3 | 12 | 3 | 6 | 9 | 12 | 16 | | | 94 | 146 | 161 | 115 |
| Traffic Totals | 1,957 | 2,509 | 3,027 | 2,298 | 2,154 | 3,260 | 2,412 | 2,629 | 2,322 | 2,054 | | | 24,577 | 25,018 | 29,629 | 30,204 |
| Traffic | 1,904 | 2,460 | 2,946 | 2,243 | 2,097 | 3,166 | 2,342 | 2,566 | 2,253 | 1,991 | | | 23,923 | 24,304 | 28,746 | 29,400 |
| DUI Traffic | 53 | 49 | 81 | 55 | 57 | 94 | 70 | 63 | 69 | 63 | | | 654 | 714 | 883 | 803 |

CHILD SUPPORT

| | | | | | | | | | | | | | | | | |
|--------------------------------------|----|----|----|----|-----|----|----|----|----|----|--|--|-----|-----|-----|-----|
| Paternity cases filed | 6 | 5 | 16 | 3 | 7 | 14 | 10 | 17 | 10 | 11 | | | 99 | 52 | 70 | 121 |
| Paternity cases established | 4 | 6 | 8 | 3 | 5 | 2 | 7 | 6 | 3 | 5 | | | 49 | 45 | 55 | 60 |
| Paternities excluded | 0 | 0 | 0 | 0 | 1 | 0 | 1 | 0 | 0 | 0 | | | 2 | 9 | 10 | 2 |
| Support Orders entered | 51 | 50 | 42 | 30 | 51 | 21 | 34 | 32 | 35 | 35 | | | 381 | 307 | 370 | 468 |
| Modification proceedings filed | 8 | 18 | 14 | 40 | 23 | 17 | 13 | 12 | 19 | 21 | | | 185 | 219 | 304 | 227 |
| Modification proceedings adjudicated | 28 | 26 | 16 | 5 | 15 | 12 | 12 | 26 | 10 | 5 | | | 135 | 155 | 184 | 165 |
| Enforcement actions filed | 16 | 24 | 44 | 43 | 25 | 22 | 24 | 46 | 22 | 32 | | | 298 | 294 | 391 | 366 |
| Enforcement actions adjudicated | 27 | 32 | 36 | 34 | 48 | 21 | 60 | 76 | 33 | 45 | | | 412 | 566 | 648 | 506 |
| Hearings set before Hearing Officer | 81 | 77 | 66 | 37 | 100 | 64 | 72 | 67 | 35 | 41 | | | 640 | 522 | 611 | 786 |
| Orders prepared by Hearing Officer | 54 | 52 | 54 | 29 | 86 | 54 | 63 | 64 | 28 | 35 | | | 519 | 359 | 432 | 637 |

2003 Projected = (2003 YTD/Day of Year) x 365 Days

n/c= not calculable



McLean County

INFORMATION SERVICES

(309) 888-5100 FAX (309) 888-5209

104 W. Front, Room 702, P.O.Box 2400

Bloomington, Illinois 61702-2400

**Request for Approval of
Work Order 12**

October 28, 2003

To the Honorable Members of the McLean County Justice Committee and the McLean County Board:

Please find attached an agreement for Work Order #12 of our Integrated Justice project. Monies budgeted for this work order and project exist within the current Fiscal Year 2003 budget.

Work Order 12 provides for Joint Application development sessions needed to complete the requirements definitions of the Juvenile Detention Facility and the Juvenile Court Services program. The result will be all of the requirements as well as a fixed price proposal for the completion of that work.

On behalf of the IJIS board and IJIS workgroup, I respectfully request the approval of Work Order #12 and welcome any questions you may have.

A handwritten signature in cursive script, appearing to read "Craig Nelson", is written over a horizontal line.

Craig Nelson
Director
McLean County Information Systems

INTEGRATED JUSTICE INFORMATION SERVICES (IJIS)
MASTER CONSULTING SERVICES AGREEMENT

WORK ORDER #12

This is a Work Order which defines Services to be performed by Northrop Grumman Space and Mission Systems Corporation, hereinafter referred to as "NORTHROP GRUMMAN", in accordance with the terms and conditions of that certain Master Consulting Services Agreement between McLean County, Illinois ("the COUNTY") and NORTHROP GRUMMAN.

Consulting Services Topic:

McLean County Integrated Justice Information, Northrop Grumman Mission Systems Proposal No. 1F436.000, Civil Case Management Proposal dated 27 August 2003.

Objectives of Consulting Services:

To conduct an additional JAD session at the County's request for the purpose of gathering additional Juvenile Detention and Juvenile Probation requirements in accordance with Northrop Grumman Mission Systems Proposal No. 1F436.000 dated 27 August 2003.

Location of Consulting Services:

At the offices of the COUNTY, NORTHROP GRUMMAN corporate offices, and such other facilities necessary or useful for the implementation of the System.

Activities to be performed:

NORTHROP GRUMMAN will perform the following services:

- Conduct a kick-off meeting and Juvenile JAD session at the County's request to identify the additional software enhancements required to incorporate Juvenile Detention and additional Juvenile Probation functionality into the E*Justice System.
- Prepare and deliver the Deliverable Materials set forth below.
- Software development and implementation of any enhancements identified and subsequently approved for implementation by the County as a result of this Work Order shall be performed following mutual agreement on price, scope and schedule for implementing said enhancements.

Deliverable Materials:

The following Deliverable Materials shall be prepared in Northrop Grumman format and delivered to the County under this Work Order.

- JAD session meeting minutes for Juvenile Detention and Juvenile Probation.
- Functional Requirements Definition Document for Juvenile Detention and Juvenile Probation
- Fixed Price Proposal for the development and implementation of the Juvenile Detention and Juvenile Probation enhancements as approved by the County for the E*Justice System.

Work Order Price:

In accordance with Attachment 2, Pricing and Milestone Payments, of the Northrop Grumman Mission Systems Proposal No. 1F436.000 dated 27 August 2003, the price for this Work Order is \$260,000 (Two Hundred Sixty Thousand Dollars).

Price/Invoice and Payment:

NORTHROP GRUMMAN will invoice the COUNTY \$260,000 (Two Hundred Sixty Thousand Dollars) in one invoice at the initiation of the work order, per the terms of Attachment 2 (Pricing and Milestone Payments) of the Northrop Grumman Mission Systems Proposal No. 1F436.000 dated 27 August 2003. The price for the services rendered and or supplies delivered under this Work Order are exclusive of all federal, state and local taxes applicable to the sale of these services or products.

The COUNTY agrees to make payment NET 30 days after receipt of an accurate invoice. Invoice shall be submitted containing the following information as a minimum:

- (a) Basic Agreement Number and Work Order Number
- (b) Name and address of Contractor
- (c) Invoice number, date, and total amount billed
- (d) Payment will be mailed to: FIRST UNION BANK
NORTHROP GRUMMAN
ACCOUNT # 01310801
P.O. BOX 8500-S-6365
PHILADELPHIA, PA 19178-0001

Completion Date:

- ✓ Upon execution of this agreement, the Services in this Work Order shall begin on or before December 1, 2003 and shall be completed no later than March 31, 2004.

Any additional support services or consulting services (Change Orders) shall be mutually agreed to in scope by NORTHROP GRUMMAN and the COUNTY and shall be performed by NORTHROP GRUMMAN at the Hourly Rate for Professional Services as set forth in the Schedule of Rates of Professional and Support Staff current at the time of the Change Order.

This Agreement shall become effective on the date the second of the two parties to sign executes this Agreement below.

IN WITNESS THEREOF, the parties hereto have caused this Agreement to be executed by their duly authorized representatives on the day, month, and year set forth below.

NORTHROP GRUMMAN SPACE &
MISSION SYSTEMS CORP.
12011 Sunset Hills Road
Attn: VAR1/6C38
Reston, VA 20190

McLEAN COUNTY, ILLINOIS
104 West Front Street
Bloomington, IL 61701

Richard A. Wallace 27 Dec 03
Signature / Date

Signature / Date

RICHARD A. WALLACE
Printed or Typed Name

Printed or Typed Name

CONTRACTS MANAGER
Title

Title

McLean COUNTY, ILLINOIS

**PROPOSAL TO PROVIDE
PROFESSIONAL SERVICES
(Cost of Sheriff Fee Service Study)**

October 2003

This proposal contains proprietary information.
Please contact MAXIMUS, Inc. before releasing any part of the proposal.

Contact: Bruce Cowans, Vice President
(847) 513-5508 Northbrook, Illinois
(217) 789-0041 Springfield, Illinois
brucecowans@maximus.com

I **Updating Cost-Based Prices for Sheriff Fees Should Help the County to Develop New Revenue and Avoid an Unintended Taxpayer Subsidy**

Executive Summary

- McLean County has taken advantage of an opportunity under Illinois law to set fee prices based on a cost study. It had our firm conduct such studies for the Sheriff in 1992 and 1997 and for the County Clerk in 2001.
- By now, the costs of the old Sheriff's study have grown. Unless a new study is done, the County is unintentionally subsidizing the cost increase with tax dollars. Fees may not be increased without a cost study.
- MAXIMUS has conducted or is conducting fee studies for approximately half of the counties in Illinois. No other firm is marketing this service across this state, but even if that were the case, MAXIMUS's prior familiarity with the 1997 Sheriff cost study would allow MAXIMUS to complete the study more efficiently.
- One option for this study would be to analyze the costs of county overhead as well. We did so in 1997 and those costs have clearly grown since that time. Nonetheless, we believe that we can use the results of the 1997 overhead analysis for this project – they understate the current cost, but capture a large portion of it. As McLean County has had a tendency in past studies to round prices down below the actual cost of serving the public, we do not see great merit in updating the 1997 overhead analysis at this time. The cost of additional professional fees to do so (\$10,250) does not seem worth it. If the County is interested in a more aggressive fee increase, the review of overhead costs may be worth the cost.
- This study would commence within two weeks of contract execution, require 8 weeks to complete and cost the County a fixed fee of \$9,250. If results parallel those of similar counties, the investment should be repaid tenfold or more.

Background

This project will determine if fee prices for certain Sheriff services are reimbursing the County. Based on our experience with other Illinois counties, we suspect that current fee prices do not pay for all costs that McLean County incurs to provide them. If the cost of the service exceeds the price paid by the customer, tax dollars must subsidize the fee service. For most counties, this is unintentional.

If the results are in the range of other Illinois counties, we expect the annual diversion of tax revenues to subsidize fee services to be tens of thousands of dollars annually, if not more.

Historically, State law set prices for fee services. In 1989, State laws setting fee prices for certain Sheriff, County Clerk and Recorder services were amended to allow services to be priced based on a cost study. Counties may enact ordinances based on these studies to supersede the statutory price.

We have served the following Illinois counties:

MAXIMUS Experience with Illinois County Fee Studies

Indicates year study performed -- multiple entries indicate years of original and updated studies

| | County | Sheriff | County Clerk | Recorder | Central Service Cost Allocation Plan (Detailed overhead cost study) | Other |
|----|------------|------------------------|--------------|------------|---|--|
| 1 | Adams | 2003 | 2003 | 2003 | | |
| 2 | Boone | 2002 | | | | |
| 3 | Bureau | 1997, 2001 | | | | |
| 4 | Champaign | 2003 | 2003 | | 2003 | |
| 5 | Christian | 2003 | 2003 | | | |
| 6 | Clark | 2003 | 2003 | 2003 | | Animal control - 2003 |
| 7 | Coles | 2003 | 2003 | 2003 | | |
| 8 | Cook | 1997 | | | 1996, 1998 | 1996 - all legal system departments |
| 9 | Cumberland | 2003 | 2003 | | | |
| 10 | Crawford | 2003 | 2003 | 2003 | | |
| 11 | DeKalb | 1992, 2000 | 1992, 2000 | | 1992 | |
| 12 | DeWitt | 1998 | | | | |
| 13 | Douglas | 2002 | 2002 | | | |
| 14 | DuPage | 1993, 1997, 1999, 2002 | 2001 | 1994, 2001 | Annually | Janitorial contract 2002, Building, zoning & stormwater 2003 |
| 15 | Edgar | 2003 | 2003 | | | |
| 16 | Ford | 2002 | 2002 | 2002 | | |
| 17 | Fulton | 2000 | 2003 | | | |
| 18 | Henry | 2002 | 2002 | | | |
| 19 | Iroquois | 1997, 2002 | | | | |
| 20 | Jackson | 2002 | 2002 | 2002 | | |
| 21 | Jefferson | 2003 | 2003 | | | |
| 22 | Kane | 1991, 2000 | 1991, 2003 | | 1991, 2000, 2003 | |
| 23 | Kendall | 2000, 2002 | 2001 | 2001 | | GIS - 2003 |
| 24 | Knox | 1998 | | | | |
| 25 | LaSalle | 2001 | 2001 | 2001 | 2001 | |
| 26 | Lee | 2003 | 2003 | 2003 | | |
| 27 | Livingston | 2001 | 2002 | | | |

The Illinois laws permitting these fee studies reference a Federal regulation (US Office of Management & Budget Circular A-87). According to this regulation, "cost" includes support from other county offices. By determining the cost of overhead and including it as a cost of fee services, many departments and services that were always assumed to run surpluses can be shown to actually operate at an unintended cost to the taxpayer.

We follow the Circular A-87 methodology to produce a study comparing the cost of a fee-funded service to current fee revenue. Nationally, our firm performs 1,200 A-87 method studies a year for state and local government agencies.

II APPROACH

Illinois laws authorizing cost-based fee studies refer to US Office of Management & Budget Circular A-87:

All direct and indirect costs, as defined in the United States Office of Management and Budget Circular A-87, may be included in the determination of the costs of each service, program and activity.

We would use A-87 definitions in a study of McLean County. The method, though more complex than most counties would use, provides better documentation and better cost recovery.

Identify Costs of Eligible Fee Services Designated by the Sheriff

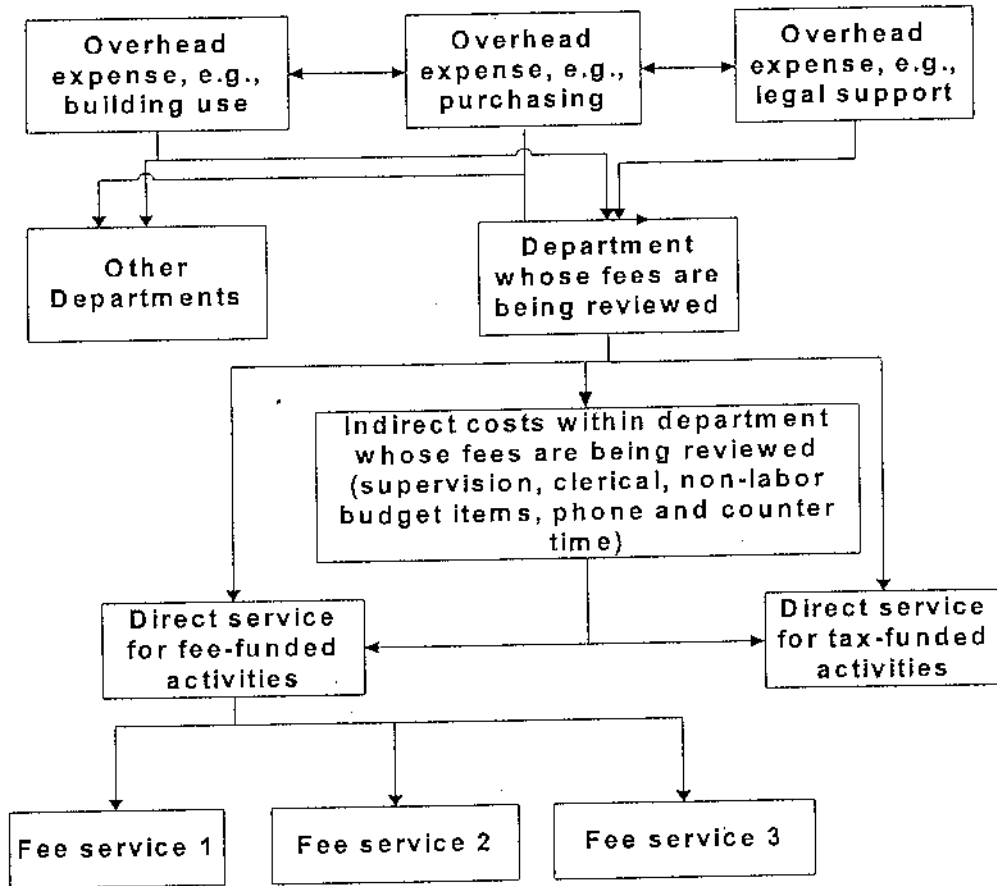
Our first visit to the County requires approximately a half day to a day onsite to collect data and conduct interviews. We build the cost model in our offices over the weeks following that first meeting.

First, we ask the Sheriff or his or her representative to identify the specific services to be studied from the relevant statutes. The statutes give a County the ability to examine a large number of services. In our experience, some services may not be worth reviewing, as they are performed very infrequently, have no paying customers, or present no opportunity for a revenue adjustment.

When the list of services is defined, we begin developing a model to account for and document the cost of each service. This model requires the following information:

- The number of times per year each service is performed, with detail on the number or percent of customers actually charged for the services (department to supply)
- Expenditure information (to be obtained from the budget and payroll)
- Current prices charged (department to supply)
- Labor effort by job title and service (to be obtained by interviewing staff from each department)
- Details on compensated absences accrued, so that fee service customers can make proportionate contributions to the expense of paid leave
- Usage of non-labor budget line items by service (to be obtained by interviewing staff from each department)

The basic flow of direct and shared expenses that we document is shown below:



Develop Report We will review our draft report in person with the Sheriff or his representative to confirm the accuracy of assumptions, facts and calculations. It is likely that the model will need editing.

In our experience, a study of this magnitude requires not more than 24 hours of professional time after delivery of the draft report to conduct any follow-up data collection and analysis, and make changes to the model. Hence, we base this proposal on that level of effort.

Setting fee prices is a policy matter for the County Board. Typically, our clients round down the price to a number more easily remembered (e.g., \$25, vs. \$27.89).

Our final report will contain the model and a narrative section that explains our approach and a template for the County to use in drafting an ordinance to implement new fees. Illinois law requires that a copy of the cost study be on file with the County Clerk for inspection.

The Sheriff's Department will need to spend approximately one week of staff time over the course of the study to support our need for interviews, data collection and review of our draft report and preparation for its discussion of our report with the Board. Most of the time that we spend on the study is in building and refining the cost documentation in our offices and does not require staff time from the client. Typically, we do not attend the Board meeting to present the report, as our narrative report is sufficient documentation.

III QUALIFICATIONS AND STAFFING

MAXIMUS, Inc. is a national management consulting firm dedicated to "Helping Government Serve the People." We serve only public sector clients. We are not auditors, but providers of specialized cost accounting and management consulting services of types not generally provided by other firms.

Our firm was founded in 1975. It is a public company, listed on the New York Stock Exchange. We maintain approximately 130 offices in the United States, employ more than 5,500 people and serve more than 5,000 public agencies annually.

The following are among a few of our recent fee study references:

| Client | Contact |
|------------------|--|
| St. Clair County | Dr. Dan Maher, 618-277-6600, ext 207 |
| Peoria County | Donna Schwab, Budget Director 309-672-6056 |
| Sangamon County | Ryan McCrady, County Administrator, 217-753-6650 |
| Champaign County | Deb Busey, County Co-Administrator, 217-384-3776 |
| Macon County | Steven Bean, County Clerk, 217-424-1305 |

Bruce Cowans, who has directed our other Illinois county fee studies, would direct our work in this project. Jeff Gossrow, a manager of our firm, may assist. The work will be conducted by either of these two who is available at the time when the County ultimately approves this project.

IV PROFESSIONAL ARRANGEMENTS

Having prepared this type of analysis for many other counties, we are able to estimate the level of effort with a high degree of confidence. Thus, instead of invoicing based on hourly rates, we propose to invoice our work as a fixed fee, which would include all professional fees and expenses required to perform this work.

The schedule for a typical study is shown below:

| Task | 1 | 2 | 3 | 4 | 5 | 6 | 7 | 8 |
|--|---|---|---|---|---|---|---|---|
| First onsite visit (data collection and interviews) | X | | | | | | | |
| Develop first draft of cost models | | X | X | X | | | | |
| Second and final onsite visit to present and explain draft reports | | | | | X | | | |
| County reviews draft data (one week for review after our second visit) | | | | | | X | | |
| Make requested changes and prepare final report | | | | | | | X | X |

If the County is able to provide the data that we require and review our draft report according to this schedule, then it should expect a final report at the end of eight weeks after our onsite work commences. We recognize that this is not always possible and to avoid the effort required to amend a contract for that reason, our proposed agreement allows for 10 weeks to complete the work. If the County adheres to this schedule, the project will be completed according to the schedule shown above.

The County will have additional work to do after we have delivered its report. It must decide whether to increase fees where the study finds current prices to be inadequate. If so, it must also decide the amount of the increases, prepare and approve an ordinance. We will provide information in a format that will help the County to draft an ordinance.

Our fee is a fixed fee of \$9,250, which includes the professional services and travel expenses for two onsite visits.

We would invoice 25 percent of our fee upon commencement and the balance upon delivery of the final report. Should the County not provide comments on the draft report within three weeks of receiving it, we will reissue the report as final.

Exhibit 1 is a copy of our proposed agreement. We will commence work within two weeks of receiving an executed copy of this agreement.

EXHIBIT 1

PROPOSED AGREEMENT

**AGREEMENT TO PROVIDE
PROFESSIONAL CONSULTING SERVICES TO
THE COUNTY OF McLEAN, ILLINOIS**

THIS AGREEMENT, entered into this _____ day of _____, 2003, and effective immediately by and between MAXIMUS, Inc., a Virginia corporation (hereinafter called the "Consultant") and the County of McLean, Illinois (hereinafter called the "County"), **WITNESSETH THAT:**

WHEREAS, the County is interested in determining the cost of certain fee services that are subject to adjustment by County ordinance pursuant to the provisions of the Illinois Counties Code 5/4-5001, hereinafter referred to as "the Code," and

WHEREAS, the Consultant has staff knowledgeable and experienced in the requirements of developing such governmental cost determination studies, and

WHEREAS, the County desires to engage the Consultant to assist in preparing such a study.

NOW THEREFORE, the parties hereto mutually agree as follows:

1. **Employment of Consultant.** The County agrees to engage the Consultant and the Consultant hereby agrees to perform the following services.

2. **Scope of Services.** The scope of services is a study of the cost of fee services under the Code that are subject to adjustment by County ordinance based on a cost study, as presented in the attached October 2003 Consultant proposal, which is incorporated herein by reference. Consultant shall spend not more than 24 hours of professional time after delivery of the draft report for further services of any kind. Legal reviews and preparation of an implementing ordinance are the responsibility of the County.

3. **Time of Performance.** The services to be performed hereunder by the Consultant shall be undertaken and completed expeditiously, within 10 weeks after onsite commencement. Provided however, the Consultant shall not be liable for delays in performance that are caused in whole or in part by the County, third parties over which the Consultant does not have the legal right to control or forces de majeure. The period of performance shall be extended by the period of delay contemplated herein. One draft report and one final written report shall be submitted to the County. In the event that more than three weeks pass after delivery of the draft report without changes noted by County, Consultant shall reissue the report as final.

4. **Compensation.** Compensation shall be a fixed fee of \$9,250, inclusive of all professional services and expenses to complete the scope of work. The fee includes two onsite visits and up to 24 hours of services of any kind after delivery of the draft report.

5. **Method of Payment.** The consultant shall be entitled to payment in accordance with the provisions of this paragraph. Consultant shall invoice 25 percent of our fee upon commencement and the balance upon delivery of the final report. County shall pay invoices received within 40 days of the invoice date.

6. **Changes.** The County may, from time to time, require changes in the scope of the services of the Consultant to be performed hereunder. Such changes, which are mutually agreed upon by and between the County and the Consultant, shall be incorporated in written amendment to this agreement.

7. **Services and Materials to be furnished by County.** The County shall make reasonable effort to furnish the Consultant with all available necessary information pertinent to the execution of this agreement. The County shall cooperate with the Consultant in carrying out the work herein, and shall provide adequate liaison between the Consultant and other agencies of the County. Consultant shall be entitled to rely upon the accuracy of information provided to it by County.

8. **Rights to Terminate Contract.** If, through any cause, the Consultant shall fail to fulfill in timely and proper manner his obligation under this agreement, the County shall thereupon have the right to terminate this agreement with or without cause, by giving written notice to the Consultant of such termination and specifying the effective date thereof, at least five (5) days before the effective date of such termination. Provided however, Consultant shall be compensated for services rendered and expenses incurred through the effective date of termination hereunder.

9. **Information and Reports.** The Consultant shall, at such time and in such form as the County may require, furnish such periodic reports concerning the status of the project and other information relative to the project as may be requested by the County. The Consultant shall furnish the County, upon request, subject to reasonable prior notice, with copies of all documents and other materials first prepared or developed in relation with or as part of the project. Consultant shall not be obligated to deliver copies in person.

10. **Records and Inspections.** The Consultant shall maintain full and accurate records with respect to all matters covered under this agreement. The County shall have free access at all reasonable and proper times to such records and the right to examine and audit the same and to make transcripts therefrom, and to inspect all

program data, documents, proceedings and activities. Consultant shall maintain interview notes, working papers and other documentation of findings for a period of five years after delivery of the final report.

11. **Accomplishment of Project.** The Consultant shall commence, carry on, and complete the project with all practicable dispatch, in a sound economical and efficient manner, in accordance with the provisions thereof and all applicable laws. In accomplishing the project, the Consultant shall take such steps as are appropriate to ensure that the work involved is properly coordinated with related work being carried on within the County.

12. **Provisions Concerning Certain Waivers.** Subject to applicable law, any right or remedy which the County may have under this contract may be waived in writing by the County by a formal waiver, if, in the judgment of the County, this contract, as so modified, will still conform to the terms and requirements of pertinent laws.

13. **Matters to be Disregarded.** The titles of the several sections, subsections, and paragraphs set forth in this contract are inserted for convenience of reference only and shall be disregarded in construing or interpreting any of the provisions of this contract.

14. **Completeness of Contract.** This contract and any additional or supplementary document or documents incorporated herein by specific reference contain all the terms and conditions agreed upon by the parties hereto, and no other agreements, oral or otherwise, regarding the subject matter of this contract or any part thereof shall have any validity or bind any of the parties hereto.

15. **County not Obligated to Third Parties.** The County and the Consultant are the only parties to this Agreement and are the only parties entitled to enforce its terms. Nothing in this Agreement gives, is intended to give, or shall be construed to give or provide, any right or benefit, whether directly or indirectly or otherwise, to third persons.

16. **When Rights and Remedies Not Waived.** In no event shall the making by the County of any payment to the Consultant constitute or be construed as a waiver by the County of any breach of covenant, or any default which may then exist, on the part of the Consultant, and the making of any such payment by the County while any such breach or default exists shall in no way impair or prejudice any right or remedy available to the County in respect to such breach or default.

17. **Personnel.** The Consultant represents that he has, or will secure at his own expense, all personnel required in performing the services under this agreement. Such

personnel shall not be employees of or have any contractual relationship with the County. All of the services required hereunder will be performed by the Consultant or under his supervision and all personnel engaged in the work shall be fully qualified to perform such services.

18. Consultant Certification. The Consultant certifies that the Consultant has not been convicted of bribery or attempting to bribe an officer or employee of the County, nor has the Consultant made an admission of guilt of such conduct, which is a matter of record.

19. Indemnification. Each party shall be responsible for its own acts and will be responsible for all damages, costs, fees and expenses that arise out of that party's own negligence, tortious acts and other unlawful conduct and the negligence, tortious acts and other unlawful conduct of its respective agents, officers and employees.

20. Assumption of Risk. In the absence of negligent or willful acts or omissions in Consultant's performance hereunder, County shall assume the risk from and against any claims, demands, actions, damages, expenses, fees and liabilities arising by virtue of any and all claims, demands or actions brought by third parties which are related in any way to County's implementations of Consultant's recommendation and findings.

21. Notices. Any notices, bills, invoices, or reports required by this agreement shall be sufficient if sent by the parties hereto in the United States mail, postage paid, to the addresses noted below. Notice shall be effective upon receipt.

John Zeunik
County Administrator
McLean County, Law & Justice Center
104 West Front Street, 7th Floor
Bloomington, Illinois 61702

Bruce Cowans
Vice President
MAXIMUS, Inc.
60 Revere Drive, Suite 200
Northbrook, IL 60062

IN WITNESS WHEREOF, the County and the Consultant have executed this agreement as of the date first written above.

County Of McLean, Illinois

MAXIMUS, Inc.



By:

Attest

By: Bruce Cowans, Vice President

McLEAN COUNTY

Fiscal Year 2004 Recommended Budget

| Fund: | General 0001 | Department: | Rescue Squad 0032 | Pages: | 100 |
|----------------------|------------------|------------------|----------------------------|--------------------|-------------------------|
| CATEGORY | FY 2002 BUDGET | FY 2003 BUDGET | RECOMMENDED FY 2004 BUDGET | AMOUNT OF INCREASE | % INCREASE OVER FY 2003 |
| Revenue | \$ - | \$ - | \$ - | \$ - | N/A |
| Salaries | \$ - | \$ - | \$ - | \$ - | N/A |
| Fringe Benefits | \$ - | \$ - | \$ - | \$ - | N/A |
| Materials & Supplies | \$ 9,890 | \$ 6,620 | \$ 6,620 | \$ - | 0.00% |
| Contractual | \$ 8,465 | \$ 6,615 | \$ 6,615 | \$ - | 0.00% |
| Capital Outlay | \$ 7,000 | \$ 3,000 | \$ 3,000 | \$ - | 0.00% |
| Other | \$ - | \$ - | \$ - | \$ - | N/A |
| TOTAL: | \$ 25,355 | \$ 16,235 | \$ 16,235 | \$ - | 0.00% |

Please see attached highlights of the Recommended Budget.

McLean County
Fiscal Year 2004 Recommended Budget

Fund: General 0001

Department: Rescue Squad 0038

Highlights of the Recommended Budget:

EXPENDITURES:

Because of the budget constraints in the FY'2004 General Fund budget, the FY'2004 Recommended Budget for the all-volunteer Rescue Squad is budgeted at the same dollar amount as the FY'2003 Adopted Budget.

Materials and Supplies:

All of the Materials and Supplies line item accounts have been budgeted in the FY'2004 Recommended Budget at the same level as in the FY'2003 Adopted Budget.

Contractual:

All of the Contractual line item accounts have been budgeted in the FY'2004 Recommended Budget at the same level as in the FY'2003 Adopted Budget.

(2)

Capital Outlay:

838.0001 Purchase of Machinery and Equipment: This line item account includes funding for the following capital expenses: replace equipment and machinery that has reached its depreciable life and/or may be damaged during a rescue operation.

839.0001 Purchase of Radio Equipment: This line item account includes funding for the following capital expenses: purchase of replacement radio.